

## Product datasheet for **TA342959**

### MON1A Rabbit Polyclonal Antibody

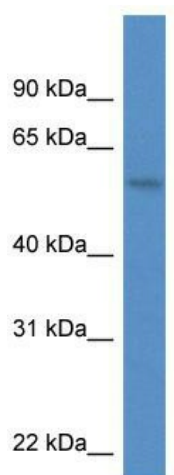
#### Product data:

Product Type:	Primary Antibodies
Applications:	WB
Recommended Dilution:	WB
Reactivity:	Human
Host:	Rabbit
Isotype:	IgG
Clonality:	Polyclonal
Immunogen:	The immunogen for anti-MON1A antibody: synthetic peptide directed towards the C terminal of human MON1A. Synthetic peptide located within the following region: GIPDLRHFLYKSKSSGLFTSPEIEAPYTSEEEQERLLGLYQYLHSRAHNA
Formulation:	Liquid. Purified antibody supplied in 1x PBS buffer with 0.09% (w/v) sodium azide and 2% sucrose. <i>Note that this product is shipped as lyophilized powder to China customers.</i>
Conjugation:	Unconjugated
Storage:	Store at -20°C as received.
Stability:	Stable for 12 months from date of receipt.
Predicted Protein Size:	55 kDa
Gene Name:	MON1 homolog A, secretory trafficking associated
Database Link:	<a href="#">NP_001135973</a> <a href="#">Entrez Gene 84315 Human</a> <a href="#">Q86VX9</a>
Background:	MON1A plays an important in membrane trafficking through the secretory apparatus. Not involved in endocytic trafficking to lysosomes.
Synonyms:	SAND1
Note:	Immunogen Sequence Homology: Dog: 100%; Pig: 100%; Rat: 100%; Horse: 100%; Human: 100%; Rabbit: 100%; Guinea pig: 100%; Mouse: 93%; Bovine: 93%; Zebrafish



[View online »](#)

Product images:



WB Suggested Anti-MON1A Antibody; Titration:  
1.0 ug/ml; Positive Control: PANC1 Whole Cell