

Product datasheet for **TA342958**

LSMD1 (NAA38) Rabbit Polyclonal Antibody

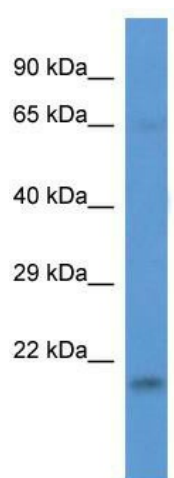
Product data:

Product Type:	Primary Antibodies
Applications:	WB
Recommended Dilution:	WB
Reactivity:	Human
Host:	Rabbit
Isotype:	IgG
Clonality:	Polyclonal
Immunogen:	The immunogen for anti-LSMD1 antibody: synthetic peptide directed towards the middle region of human LSMD1. Synthetic peptide located within the following region: RAAWAARSERLLHPAQSDGEREDSAAERARQLEALLNKTMRIRMTDGR
Formulation:	Liquid. Purified antibody supplied in 1x PBS buffer with 0.09% (w/v) sodium azide and 2% sucrose. <i>Note that this product is shipped as lyophilized powder to China customers.</i>
Conjugation:	Unconjugated
Storage:	Store at -20°C as received.
Stability:	Stable for 12 months from date of receipt.
Predicted Protein Size:	19 kDa
Gene Name:	N(alpha)-acetyltransferase 38, NatC auxiliary subunit
Database Link:	NP_115732 Entrez Gene 84316 Human Q9BRA0
Background:	As a component of the N-terminal acetyltransferase C (NatC) complex, LSMD1 may catalyze acetylation of N-terminal methionine residues.
Synonyms:	LSMD1; PFAAP2
Note:	Immunogen Sequence Homology: Human: 100%; Dog: 86%; Horse: 86%; Rabbit: 86%; Bovine: 80%; Pig: 79%; Rat: 79%; Mouse: 79%; Guinea pig: 79%



[View online »](#)

Product images:



WB Suggested Anti-LSMD1 Antibody; Titration:
1.0 ug/ml; Positive Control: 721_B Whole Cell