

Product datasheet for **TA342957**

LOXL4 Rabbit Polyclonal Antibody

Product data:

Product Type:	Primary Antibodies
Applications:	WB
Recommended Dilution:	WB
Reactivity:	Human
Host:	Rabbit
Isotype:	IgG
Clonality:	Polyclonal
Immunogen:	The immunogen for anti-LOXL4 antibody: synthetic peptide directed towards the middle region of human LOXL4. Synthetic peptide located within the following region: ARGKLRPACPGGMHAVVSCVAGPHFRPPKTKPQRKGSWAEPRVLRSGA
Formulation:	Liquid. Purified antibody supplied in 1x PBS buffer with 0.09% (w/v) sodium azide and 2% sucrose.
Conjugation:	Unconjugated
Storage:	Store at -20°C as received.
Stability:	Stable for 12 months from date of receipt.
Predicted Protein Size:	82 kDa
Gene Name:	lysyl oxidase like 4
Database Link:	NP_115587 Entrez Gene 84171 Human Q96JB6
Background:	This gene encodes a member of the lysyl oxidase gene family. The prototypic member of the family is essential to the biogenesis of connective tissue, encoding an extracellular copper-dependent amine oxidase that catalyses the first step in the formation of crosslinks in collagens and elastin. A highly conserved amino acid sequence at the C-terminus end appears to be sufficient for amine oxidase activity, suggesting that each family member may retain this function. The N-terminus is poorly conserved and may impart additional roles in developmental regulation, senescence, tumor suppression, cell growth control, and chemotaxis to each member of the family.



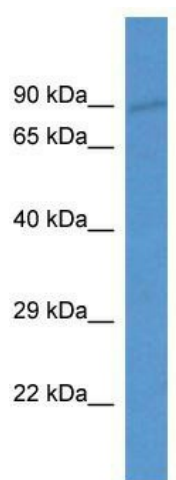
[View online »](#)

Synonyms: LOXC

Note: Immunogen Sequence Homology: Human: 100%

Protein Families: Druggable Genome, Secreted Protein

Product images:



WB Suggested Anti-LOXL4 Antibody; Titration: 1.0 ug/ml; Positive Control: Fetal Heart