

Product datasheet for **TA342955**

FYTTD1 Rabbit Polyclonal Antibody

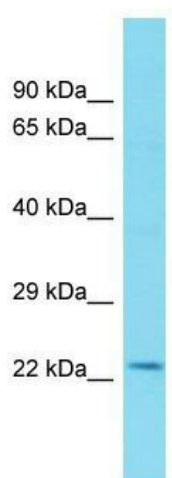
Product data:

Product Type:	Primary Antibodies
Applications:	WB
Recommended Dilution:	WB
Reactivity:	Rat
Host:	Rabbit
Isotype:	IgG
Clonality:	Polyclonal
Immunogen:	The immunogen for anti-Fytttd1 antibody is: synthetic peptide directed towards the middle region of Rat Fytttd1. Synthetic peptide located within the following region: TEQLIDDDVAKRTRQTQKPRLTRTAVPSFLTKREQSDVKKIPKGVPLQFD
Formulation:	Liquid. Purified antibody supplied in 1x PBS buffer with 0.09% (w/v) sodium azide and 2% sucrose. <i>Note that this product is shipped as lyophilized powder to China customers.</i>
Conjugation:	Unconjugated
Storage:	Store at -20°C as received.
Stability:	Stable for 12 months from date of receipt.
Predicted Protein Size:	20 kDa
Gene Name:	forty-two-three domain containing 1
Database Link:	NP_115664 Entrez Gene 360726 Rat Q96QD9
Background:	Fytttd1 is required for mRNA export from the nucleus to the cytoplasm. It acts as an adapter that uses the DDX39B/UAP56-NFX1 pathway to ensure efficient mRNA export and delivering to the nuclear pore. Fytttd1 associates with spliced and unspliced mRNAs simultaneously with ALYREF/THOC4.
Synonyms:	UIF
Note:	Immunogen Sequence Homology: Dog: 100%; Pig: 100%; Rat: 100%; Human: 100%; Mouse: 100%; Horse: 93%; Rabbit: 93%; Bovine: 86%



[View online »](#)

Product images:



Host: Rabbit; Target Name: Fytttd1; Sample
Tissue: Rat Thymus lysates; Antibody Dilution: 1.0
ug/ml