

Product datasheet for **TA342954**

FLYWCH1 Rabbit Polyclonal Antibody

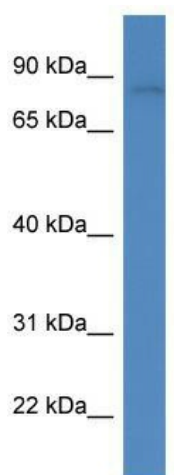
Product data:

Product Type:	Primary Antibodies
Applications:	WB
Recommended Dilution:	WB
Reactivity:	Human
Host:	Rabbit
Isotype:	IgG
Clonality:	Polyclonal
Immunogen:	The immunogen for anti-FLYWCH1 antibody: synthetic peptide directed towards the middle region of human FLYWCH1. Synthetic peptide located within the following region: RDHALHGCRSRAITQGQRVTVMRGHCHQPDMEGLEARRQKEKAVETLQAG
Formulation:	Liquid. Purified antibody supplied in 1x PBS buffer with 0.09% (w/v) sodium azide and 2% sucrose.
Conjugation:	Unconjugated
Storage:	Store at -20°C as received.
Stability:	Stable for 12 months from date of receipt.
Predicted Protein Size:	80 kDa
Gene Name:	FLYWCH-type zinc finger 1
Database Link:	NP_115672 Entrez Gene 84256 Human Q4VC44
Background:	The function remains unknown.
Synonyms:	FLYWCH-type zinc finger 1; KIAA1552
Note:	Immunogen Sequence Homology: Human: 100%; Dog: 93%; Pig: 93%; Horse: 92%; Guinea pig: 92%; Rat: 91%; Bovine: 83%; Mouse



[View online »](#)

Product images:



WB Suggested Anti-FLYWCH1 Antibody; Titration:
1.0 ug/ml; Positive Control: Fetal Kidney