

## Product datasheet for **TA342952**

### FBXW9 Rabbit Polyclonal Antibody

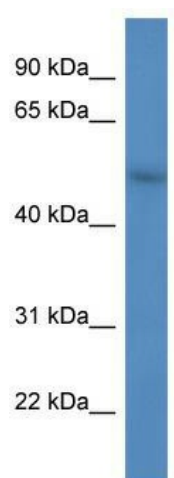
#### Product data:

Product Type:	Primary Antibodies
Applications:	WB
Recommended Dilution:	WB
Reactivity:	Human
Host:	Rabbit
Isotype:	IgG
Clonality:	Polyclonal
Immunogen:	The immunogen for anti-FBXW9 antibody: synthetic peptide directed towards the C terminal of human FBXW9. Synthetic peptide located within the following region: PDILVTGTYDKKVTIYDPRAGPALLKHQQLHSRPVLTLLADDRHIISGSE
Formulation:	Liquid. Purified antibody supplied in 1x PBS buffer with 0.09% (w/v) sodium azide and 2% sucrose.
Conjugation:	Unconjugated
Storage:	Store at -20°C as received.
Stability:	Stable for 12 months from date of receipt.
Predicted Protein Size:	51 kDa
Gene Name:	F-box and WD repeat domain containing 9
Database Link:	<a href="#">NP_115677</a> <a href="#">Entrez Gene 84261 Human</a> <a href="#">Q5XUX1</a>
Background:	Members of the F-box protein family, such as FBXW9, are characterized by an approximately 40-amino acid F-box motif. SCF complexes, formed by SKP1, cullin, and F-box proteins, act as protein-ubiquitin ligases. F-box proteins interact with SKP1 through the F box, and they interact with ubiquitination targets through other protein interaction domains.
Synonyms:	Fbw9
Note:	Immunogen Sequence Homology: Dog: 100%; Pig: 100%; Rat: 100%; Horse: 100%; Human: 100%; Mouse: 100%; Bovine: 100%; Guinea pig: 93%; Rabbit: 79%
Protein Families:	Druggable Genome



[View online »](#)

## Product images:



WB Suggested Anti-FBXW9 Antibody; Titration:  
1.0 ug/ml; Positive Control: HepG2 Whole Cell