

Product datasheet for **TA342951**

ELOF1 Rabbit Polyclonal Antibody

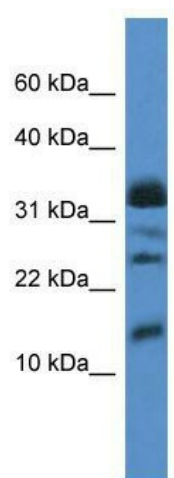
Product data:

Product Type:	Primary Antibodies
Applications:	WB
Recommended Dilution:	WB
Reactivity:	Human
Host:	Rabbit
Isotype:	IgG
Clonality:	Polyclonal
Immunogen:	The immunogen for anti-ELOF1 antibody: synthetic peptide directed towards the middle region of human ELOF1. Synthetic peptide located within the following region: SCDVKMDRARNTGVISCTVCLEEFQTPITYLSEPVVDVYSDWIDACEAANQ
Formulation:	Liquid. Purified antibody supplied in 1x PBS buffer with 0.09% (w/v) sodium azide and 2% sucrose. <i>Note that this product is shipped as lyophilized powder to China customers.</i>
Conjugation:	Unconjugated
Storage:	Store at -20°C as received.
Stability:	Stable for 12 months from date of receipt.
Predicted Protein Size:	9 kDa
Gene Name:	elongation factor 1 homolog
Database Link:	NP_115753 Entrez Gene 84337 Human P60002
Background:	ELOF1 is a transcription elongation factor implicated in the maintenance of proper chromatin structure in actively transcribed regions.
Synonyms:	ELF1
Note:	Immunogen Sequence Homology: Dog: 100%; Pig: 100%; Rat: 100%; Horse: 100%; Human: 100%; Mouse: 100%; Yeast: 100%; Bovine: 100%; Zebrafish: 100%; Guinea pig: 100%; Goat: 86%



[View online »](#)

Product images:



WB Suggested Anti-ELOF1 Antibody; Titration: 1.0 ug/ml; Positive Control: MCF7 Whole Cell