

Product datasheet for **TA342950**

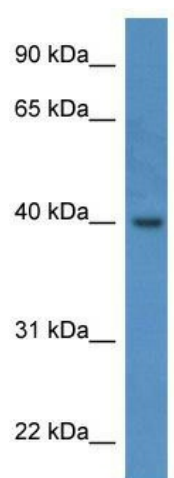
RBED1 (ELMOD3) Rabbit Polyclonal Antibody

Product data:

Product Type:	Primary Antibodies
Applications:	WB
Recommended Dilution:	WB
Reactivity:	Human
Host:	Rabbit
Isotype:	IgG
Clonality:	Polyclonal
Immunogen:	The immunogen for anti-ELMOD3 antibody: synthetic peptide directed towards the C terminal of human ELMOD3. Synthetic peptide located within the following region: FRLSRHHIQQFPFCLMSVNITHIAIQALREECLSRECNRQQKVIPVVNSF
Formulation:	Liquid. Purified antibody supplied in 1x PBS buffer with 0.09% (w/v) sodium azide and 2% sucrose.
Conjugation:	Unconjugated
Storage:	Store at -20°C as received.
Stability:	Stable for 12 months from date of receipt.
Predicted Protein Size:	44 kDa
Gene Name:	ELMO domain containing 3
Database Link:	NP_115589 Entrez Gene 84173 Human Q96FG2
Background:	ELMOD3 lacks GTPase-activating protein (GAP) toward guanine nucleotide exchange factor ARL2.
Synonyms:	DFNB88; LST3; RBED1; RBM29
Note:	Immunogen Sequence Homology: Dog: 100%; Pig: 100%; Horse: 100%; Human: 100%; Bovine: 100%; Rabbit: 100%; Rat: 93%; Mouse: 93%; Guinea pig: 93%



[View online »](#)

Product images:

WB Suggested Anti-ELMOD3 Antibody Titration:
0.2-1 ug/ml; ELISA Titer: 1:312500; Positive
Control: Human Lung