

Product datasheet for **TA342947**

CHCHD6 Rabbit Polyclonal Antibody

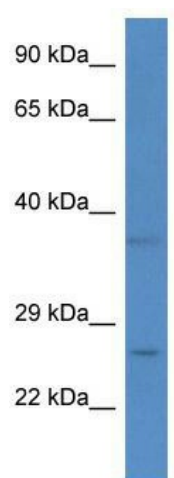
Product data:

Product Type:	Primary Antibodies
Applications:	WB
Recommended Dilution:	WB
Reactivity:	Human
Host:	Rabbit
Isotype:	IgG
Clonality:	Polyclonal
Immunogen:	The immunogen for anti-CHCHD6 antibody: synthetic peptide directed towards the N terminal of human CHCHD6. Synthetic peptide located within the following region: LPRSGSSGGQQPSGMKEGVKRYEQEHAAIQDKLFQVAKREREAATKHSKA
Formulation:	Liquid. Purified antibody supplied in 1x PBS buffer with 0.09% (w/v) sodium azide and 2% sucrose. <i>Note that this product is shipped as lyophilized powder to China customers.</i>
Conjugation:	Unconjugated
Storage:	Store at -20°C as received.
Stability:	Stable for 12 months from date of receipt.
Predicted Protein Size:	26 kDa
Gene Name:	coiled-coil-helix-coiled-coil-helix domain containing 6
Database Link:	NP_115719 Entrez Gene 84303 Human Q9BRQ6
Background:	The function remains unknown.
Synonyms:	CHCM1; Mic25; PPP1R23
Note:	Immunogen Sequence Homology: Dog: 100%; Human: 100%; Pig: 90%; Guinea pig: 90%; Rabbit: 85%



[View online »](#)

Product images:



WB Suggested Anti-CHCHD6 Antibody; Titration:
1.0 ug/ml; Positive Control: Fetal Liver