

Product datasheet for **TA342946**

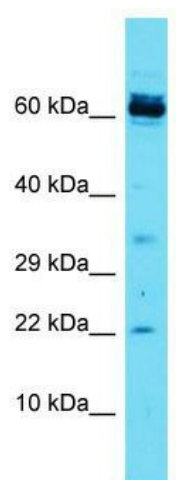
CCDC115 Rabbit Polyclonal Antibody

Product data:

Product Type:	Primary Antibodies
Applications:	WB
Recommended Dilution:	WB
Reactivity:	Human
Host:	Rabbit
Isotype:	IgG
Clonality:	Polyclonal
Immunogen:	The immunogen for anti-CCDC115 antibody is: synthetic peptide directed towards the N-terminal region of Human CCDC115. Synthetic peptide located within the following region: YAMGAKSVGPLQYASHMEPQVCLHASEAQEGLQKFKVVRAGVHAPEEVGP
Formulation:	Liquid. Purified antibody supplied in 1x PBS buffer with 0.09% (w/v) sodium azide and 2% sucrose. <i>Note that this product is shipped as lyophilized powder to China customers.</i>
Conjugation:	Unconjugated
Storage:	Store at -20°C as received.
Stability:	Stable for 12 months from date of receipt.
Predicted Protein Size:	20 kDa
Gene Name:	coiled-coil domain containing 115
Database Link:	NP_115733 Entrez Gene 84317 Human Q96NT0
Background:	The function of this protein remains unknown.
Synonyms:	ccp1; CDG20
Note:	Immunogen Sequence Homology: Human: 100%; Dog: 90%; Pig: 90%; Bovine: 90%



[View online »](#)

Product images:

Host: Rabbit; Target Name: CCDC115; Sample
Tissue: Jurkat Whole Cell lysates; Antibody
Dilution: 1.0 ug/ml