

Product datasheet for **TA342943**

BRMS1L Rabbit Polyclonal Antibody

Product data:

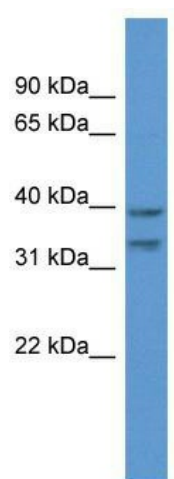
| | |
|-------------------------|---|
| Product Type: | Primary Antibodies |
| Applications: | WB |
| Recommended Dilution: | WB |
| Reactivity: | Human |
| Host: | Rabbit |
| Isotype: | IgG |
| Clonality: | Polyclonal |
| Immunogen: | The immunogen for anti-BRMS1L antibody: synthetic peptide directed towards the C terminal of human BRMS1L. Synthetic peptide located within the following region: GQTICIDKKDECP T SAVIT T INHDEVWFKRPD GSKSKLYISQLQKGKYSI |
| Formulation: | Liquid. Purified antibody supplied in 1x PBS buffer with 0.09% (w/v) sodium azide and 2% sucrose. <i>Note that this product is shipped as lyophilized powder to China customers.</i> |
| Conjugation: | Unconjugated |
| Storage: | Store at -20°C as received. |
| Stability: | Stable for 12 months from date of receipt. |
| Predicted Protein Size: | 37 kDa |
| Gene Name: | breast cancer metastasis-suppressor 1-like |
| Database Link: | NP_115728 Entrez Gene 84312 Human Q5PSV4 |
| Background: | The protein encoded by this gene shows sequence similarity to the human breast carcinoma metastasis suppressor (BRMS1) protein and the mammalian Sds3 (suppressor of defective silencing 3) proteins. This protein is a component of the mSin3a family of histone deacetylase complexes (HDAC). |
| Synonyms: | BRMS1 |
| Note: | Immunogen Sequence Homology: Dog: 100%; Pig: 100%; Rat: 100%; Horse: 100%; Human: 100%; Mouse: 100%; Bovine: 100%; Rabbit: 100%; Guinea pig: 100%; Zebrafish: 86% |



[View online »](#)

Protein Families: Druggable Genome

Product images:



WB Suggested Anti-BRMS1L Antibody; Titration:
1.0 ug/ml; Positive Control: ACHN Whole Cell