

## Product datasheet for **TA342942**

### **ANKRD32 (SLF1) Rabbit Polyclonal Antibody**

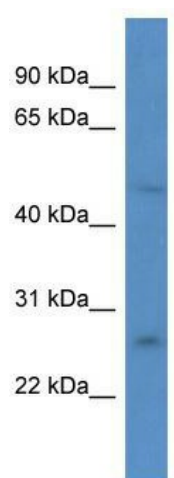
#### **Product data:**

<b>Product Type:</b>	Primary Antibodies
<b>Applications:</b>	WB
<b>Recommended Dilution:</b>	WB
<b>Reactivity:</b>	Human
<b>Host:</b>	Rabbit
<b>Isotype:</b>	IgG
<b>Clonality:</b>	Polyclonal
<b>Immunogen:</b>	The immunogen for anti-ANKRD32 antibody: synthetic peptide directed towards the N terminal of human ANKRD32. Synthetic peptide located within the following region: TNSVWTEHSNEETNKDFRKDAGFLEMKGALRETMVRTQKEMQNHEDVNVG
<b>Formulation:</b>	Liquid. Purified antibody supplied in 1x PBS buffer with 0.09% (w/v) sodium azide and 2% sucrose. <i>Note that this product is shipped as lyophilized powder to China customers.</i>
<b>Conjugation:</b>	Unconjugated
<b>Storage:</b>	Store at -20°C as received.
<b>Stability:</b>	Stable for 12 months from date of receipt.
<b>Predicted Protein Size:</b>	47 kDa
<b>Gene Name:</b>	SMC5-SMC6 complex localization factor 1
<b>Database Link:</b>	<a href="#">NP_115666</a> <a href="#">Entrez Gene 84250 Human</a> <a href="#">Q9BQI6</a>
<b>Background:</b>	The function remains unknown.
<b>Synonyms:</b>	ANKRD32; BRCTD1; BRCTx
<b>Note:</b>	Immunogen Sequence Homology: Human: 100%; Horse: 92%; Rat: 82%; Pig: 75%; Guinea pig: 75%



[View online »](#)

## Product images:



WB Suggested Anti-ANKRD32 Antibody; Titration:  
1.0 ug/ml; Positive Control: Jurkat Whole Cell