

Product datasheet for **TA342940**

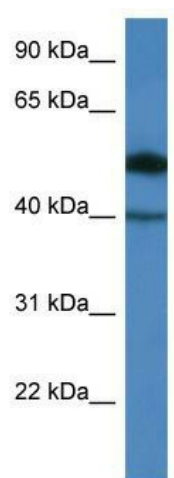
C9orf64 Rabbit Polyclonal Antibody

Product data:

Product Type:	Primary Antibodies
Applications:	WB
Recommended Dilution:	WB
Reactivity:	Human
Host:	Rabbit
Isotype:	IgG
Clonality:	Polyclonal
Immunogen:	The immunogen for anti-C9orf64 antibody: synthetic peptide directed towards the N terminal of human C9orf64. Synthetic peptide located within the following region: RVEGWKALHELNPRAADEAAVNWVFVTDLTNFSFWSEQDEHKCVVRYRGK
Formulation:	Liquid. Purified antibody supplied in 1x PBS buffer with 0.09% (w/v) sodium azide and 2% sucrose.
Conjugation:	Unconjugated
Storage:	Store at -20°C as received.
Stability:	Stable for 12 months from date of receipt.
Predicted Protein Size:	39 kDa
Gene Name:	chromosome 9 open reading frame 64
Database Link:	NP_115683 Entrez Gene 84267 Human Q5T6V5
Background:	The function remains unknown.
Synonyms:	RP11-575L7.5
Note:	Immunogen Sequence Homology: Rat: 100%; Human: 100%; Dog: 93%; Pig: 93%; Rabbit: 93%; Horse: 90%; Bovine: 86%; Guinea pig: 79%



[View online »](#)

Product images:

WB Suggested Anti-C9orf64 Antibody; Titration:
1.0 ug/ml; Positive Control: COLO205 Whole Cell