

Product datasheet for **TA342938**

ACBD6 Rabbit Polyclonal Antibody

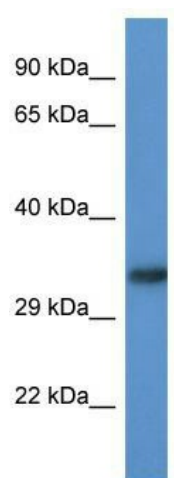
Product data:

Product Type:	Primary Antibodies
Applications:	WB
Recommended Dilution:	WB
Reactivity:	Human
Host:	Rabbit
Isotype:	IgG
Clonality:	Polyclonal
Immunogen:	The immunogen for anti-ACBD6 antibody: synthetic peptide directed towards the middle region of human ACBD6. Synthetic peptide located within the following region: EAWKALGDSSPSQAMQEYIAVVKKLDPGWNPQIPEKKGKEANTGFGGPVI
Formulation:	Liquid. Purified antibody supplied in 1x PBS buffer with 0.09% (w/v) sodium azide and 2% sucrose. <i>Note that this product is shipped as lyophilized powder to China customers.</i>
Conjugation:	Unconjugated
Storage:	Store at -20°C as received.
Stability:	Stable for 12 months from date of receipt.
Predicted Protein Size:	31 kDa
Gene Name:	acyl-CoA binding domain containing 6
Database Link:	NP_115736 Entrez Gene 84320 Human Q9BR61
Background:	ACBD6 binds long-chain acyl-coenzyme A molecules with a strong preference for unsaturated C18:1-CoA, lower affinity for unsaturated C20:4-CoA, and very weak affinity for saturated C16:0-CoA. Does not bind fatty acids.
Synonyms:	MGC2404
Note:	Immunogen Sequence Homology: Human: 100%; Rabbit: 100%; Dog: 93%; Bovine: 93%; Pig: 86%; Horse: 86%



[View online »](#)

Product images:



WB Suggested Anti-ACBD6 Antibody; Titration: 1.0 ug/ml; Positive Control: Fetal Heart