

## Product datasheet for **TA342937**

### ACBD6 Rabbit Polyclonal Antibody

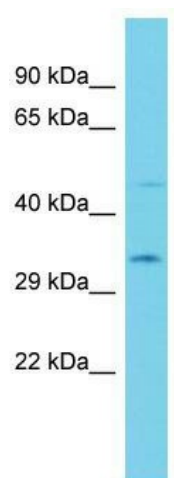
#### Product data:

Product Type:	Primary Antibodies
Applications:	WB
Recommended Dilution:	WB
Reactivity:	Rat
Host:	Rabbit
Isotype:	IgG
Clonality:	Polyclonal
Immunogen:	The immunogen for anti-Acbd6 antibody is: synthetic peptide directed towards the middle region of Rat Acbd6. Synthetic peptide located within the following region: SEKKGKEGSSGFGGPVSSLYHEETIREEDKNIFDYCRENNIDHITKAIK
Formulation:	Liquid. Purified antibody supplied in 1x PBS buffer with 0.09% (w/v) sodium azide and 2% sucrose. <i>Note that this product is shipped as lyophilized powder to China customers.</i>
Conjugation:	Unconjugated
Storage:	Store at -20°C as received.
Stability:	Stable for 12 months from date of receipt.
Predicted Protein Size:	31 kDa
Gene Name:	acyl-CoA binding domain containing 6
Database Link:	<a href="#">NP_115736</a> <a href="#">Entrez Gene 289125 Rat</a> <a href="#">Q9BR61</a>
Background:	Acbd6 binds long-chain acyl-coenzyme A molecules with a strong preference for unsaturated C18:1-CoA, lower affinity for unsaturated C20:4-CoA, and very weak affinity for saturated C16:0-CoA. It Does not bind fatty acids.
Synonyms:	MGC2404
Note:	Immunogen Sequence Homology: Rat: 100%; Human: 100%; Mouse: 100%; Rabbit: 100%; Dog: 93%; Pig: 93%; Horse: 93%; Zebrafish: 93%; Guinea pig: 93%; Bovine: 86%



[View online »](#)

## Product images:



Host: Rabbit; Target Name: Acbd6; Sample  
Tissue: Rat Stomach lysates; Antibody Dilution:  
1.0 ug/ml