

Product datasheet for **TA342936**

Morg1 (WDR83) Rabbit Polyclonal Antibody

Product data:

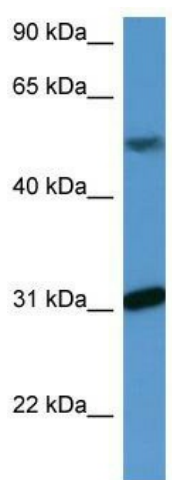
Product Type:	Primary Antibodies
Applications:	WB
Recommended Dilution:	WB
Reactivity:	Human
Host:	Rabbit
Isotype:	IgG
Clonality:	Polyclonal
Immunogen:	The immunogen for anti-WDR83 antibody: synthetic peptide directed towards the C terminal of human WDR83. Synthetic peptide located within the following region: EGALALALPVGSGVVQSLAYHPTPECLLTAMGGSVQCWREEAYEAEDGAG
Formulation:	Liquid. Purified antibody supplied in 1x PBS buffer with 0.09% (w/v) sodium azide and 2% sucrose. <i>Note that this product is shipped as lyophilized powder to China customers.</i>
Conjugation:	Unconjugated
Storage:	Store at -20°C as received.
Stability:	Stable for 12 months from date of receipt.
Predicted Protein Size:	34 kDa
Gene Name:	WD repeat domain 83
Database Link:	NP_115708 Entrez Gene 84292 Human Q9BRX9
Background:	This gene encodes a member of the WD-40 protein family. The protein is proposed to function as a molecular scaffold for various multimeric protein complexes. The protein associates with several components of the extracellular signal-regulated kinase (ERK) pathway, and promotes ERK activity in response to serum or other signals. The protein also interacts with egl nine homolog 3 (EGLN3, also known as PHD3) and regulates expression of hypoxia-inducible factor 1, and has been purified as part of the spliceosome.
Synonyms:	MORG1



[View online »](#)

Note: Immunogen Sequence Homology: Pig: 100%; Human: 100%; Guinea pig: 100%; Horse: 93%; Dog: 86%; Rat: 85%; Mouse: 85%; Bovine: 85%; Rabbit: 79%

Product images:



WB Suggested Anti-WDR83 Antibody Titration:
0.2-1 ug/ml; ELISA Titer: 1:312500; Positive
Control: Human Liver