

## Product datasheet for **TA342935**

### TUBB6 Rabbit Polyclonal Antibody

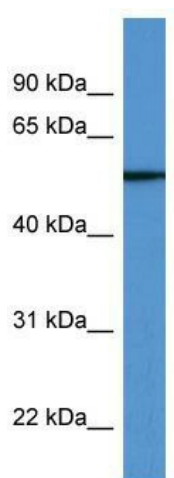
#### Product data:

Product Type:	Primary Antibodies
Applications:	WB
Recommended Dilution:	WB
Reactivity:	Human
Host:	Rabbit
Isotype:	IgG
Clonality:	Polyclonal
Immunogen:	The immunogen for anti-TUBB6 antibody: synthetic peptide directed towards the N terminal of human TUBB6. Synthetic peptide located within the following region: QLERINVYVYNESSSQKYVPRAALVDLEPGTMDSVRSRSGPFGQLFRPDNFIF
Formulation:	Liquid. Purified antibody supplied in 1x PBS buffer with 0.09% (w/v) sodium azide and 2% sucrose.
Conjugation:	Unconjugated
Storage:	Store at -20°C as received.
Stability:	Stable for 12 months from date of receipt.
Predicted Protein Size:	50 kDa
Gene Name:	tubulin beta 6 class V
Database Link:	<a href="#">NP_115914</a> <a href="#">Entrez Gene 84617 Human</a> <a href="#">Q9BUF5</a>
Background:	Tubulin is the major constituent of microtubules. It binds two moles of GTP, one at an exchangeable site on the beta chain and one at a non-exchangeable site on the alpha-chain.
Synonyms:	HsT1601; TUBB-5
Note:	Immunogen Sequence Homology: Dog: 100%; Pig: 100%; Horse: 100%; Human: 100%; Bovine: 100%; Rabbit: 100%; Rat: 93%; Mouse: 93%; Yeast: 85%; Zebrafish: 85%; Guinea pig: 85%
Protein Families:	Druggable Genome
Protein Pathways:	Gap junction, Pathogenic Escherichia coli infection



[View online »](#)

## Product images:



WB Suggested Anti-TUBB6 Antibody Titration:  
0.2-1 ug/ml; ELISA Titer: 1:312500; Positive  
Control: Human Placenta