

Product datasheet for **TA342934**

STYXL1 Rabbit Polyclonal Antibody

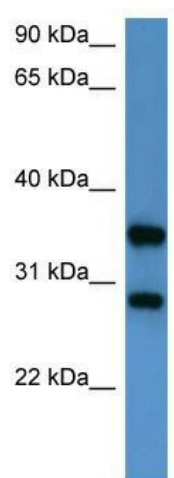
Product data:

Product Type:	Primary Antibodies
Applications:	WB
Recommended Dilution:	WB
Reactivity:	Human
Host:	Rabbit
Isotype:	IgG
Clonality:	Polyclonal
Immunogen:	The immunogen for anti-STYXL1 antibody: synthetic peptide directed towards the middle region of human STYXL1. Synthetic peptide located within the following region: FLRTQKIIWMPQELDAFQPYPIEIVPGKVFGNFSQACDPKIQKDLKKA
Formulation:	Liquid. Purified antibody supplied in 1x PBS buffer with 0.09% (w/v) sodium azide and 2% sucrose.
Conjugation:	Unconjugated
Storage:	Store at -20°C as received.
Stability:	Stable for 12 months from date of receipt.
Predicted Protein Size:	36 kDa
Gene Name:	serine/threonine/tyrosine interacting-like 1
Database Link:	NP_057170 Entrez Gene 51657 Human Q9Y6J8
Background:	STYXL1 is a probable pseudophosphatase. It contains a Ser residue instead of a conserved Cys residue in the dsPTPase catalytic loop which probably renders it catalytically inactive as a phosphatase. The binding pocket may be however sufficiently preserved to bind phosphorylated substrates, and maybe protect them from phosphatases.
Synonyms:	DUSP24; MK-STYX; MKSTYX
Note:	Immunogen Sequence Homology: Dog: 100%; Pig: 100%; Horse: 100%; Human: 100%; Bovine: 100%; Rabbit: 93%; Guinea pig: 86%; Rat: 79%
Protein Families:	Druggable Genome, Phosphatase



[View online »](#)

Product images:



WB Suggested Anti-STYXL1 Antibody Titration:
0.2-1 ug/ml; ELISA Titer: 1:62500; Positive Control:
HepG2 cell lysate