

Product datasheet for **TA342932**

SRRM4 Rabbit Polyclonal Antibody

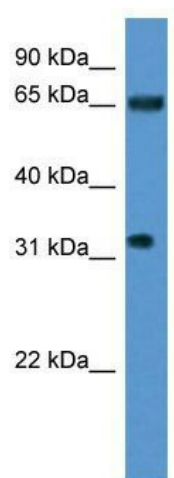
Product data:

Product Type:	Primary Antibodies
Applications:	WB
Recommended Dilution:	WB
Reactivity:	Human
Host:	Rabbit
Isotype:	IgG
Clonality:	Polyclonal
Immunogen:	The immunogen for anti-SRRM4 antibody: synthetic peptide directed towards the middle region of human SRRM4. Synthetic peptide located within the following region: KTASPLTTSRGRSQEYDSGNDTSSPPSTQTSSARSRGQEKGPSGLSKS
Formulation:	Liquid. Purified antibody supplied in 1x PBS buffer with 0.09% (w/v) sodium azide and 2% sucrose. <i>Note that this product is shipped as lyophilized powder to China customers.</i>
Conjugation:	Unconjugated
Storage:	Store at -20°C as received.
Stability:	Stable for 12 months from date of receipt.
Predicted Protein Size:	68 kDa
Gene Name:	serine/arginine repetitive matrix 4
Database Link:	NP_919262 Entrez Gene 84530 Human A7MD48
Background:	SRRM4 promotes alternative splicing and inclusion of neural-specific exons in target mRNAs
Synonyms:	KIAA1853; MU-MB-2.76; nSR100
Note:	Immunogen Sequence Homology: Rat: 100%; Human: 100%; Mouse: 100%; Dog: 93%; Pig: 93%; Horse: 93%; Guinea pig: 93%; Rabbit: 92%; Bovine: 86%



[View online »](#)

Product images:



WB Suggested Anti-SRRM4 Antibody Titration:
0.2-1 ug/ml; ELISA Titer: 1:1562500; Positive
Control: Human Liver