

## Product datasheet for TA342931

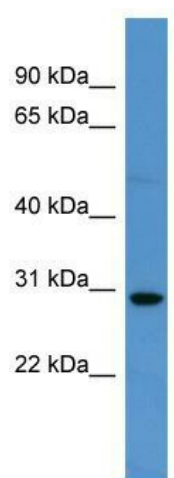
### SPRED2 Rabbit Polyclonal Antibody

#### Product data:

Product Type:	Primary Antibodies
Applications:	WB
Recommended Dilution:	WB
Reactivity:	Human
Host:	Rabbit
Isotype:	IgG
Clonality:	Polyclonal
Immunogen:	The immunogen for anti-SPRED2 antibody: synthetic peptide directed towards the C terminal of human SPRED2. Synthetic peptide located within the following region: NHEENRRGHCQDAPDSVRTCIRRVS CMWCADSM LYHCMSDPEGDYTDPCS
Formulation:	Liquid. Purified antibody supplied in 1x PBS buffer with 0.09% (w/v) sodium azide and 2% sucrose. <i>Note that this product is shipped as lyophilized powder to China customers.</i>
Conjugation:	Unconjugated
Storage:	Store at -20°C as received.
Stability:	Stable for 12 months from date of receipt.
Predicted Protein Size:	47 kDa
Gene Name:	sprouty related EVH1 domain containing 2
Database Link:	<a href="#">NP_861449</a> <a href="#">Entrez Gene 200734 Human</a> <a href="#">Q7Z698</a>
Background:	SPRED2 is a member of the Sprouty /SPRED family of proteins that regulate growth factor-induced activation of the MAP kinase cascade .
Synonyms:	Spred-2
Note:	Immunogen Sequence Homology: Pig: 100%; Rat: 100%; Human: 100%; Mouse: 100%; Bovine: 100%; Rabbit: 100%; Guinea pig: 100%; Horse: 93%; Dog: 92%; Zebrafish: 85%
Protein Pathways:	Jak-STAT signaling pathway



[View online »](#)

**Product images:**

WB Suggested Anti-SPRED2 Antibody Titration:  
0.2-1 ug/ml; ELISA Titer: 1:312500; Positive  
Control: HepG2 cell lysate There is BioGPS gene  
expression data showing that SPRED2 is  
expressed in HepG2