

Product datasheet for **TA342930**

SPIRE2 Rabbit Polyclonal Antibody

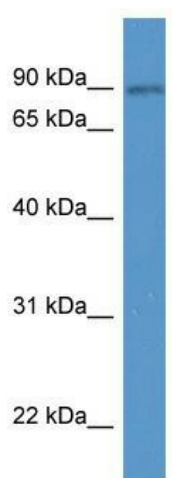
Product data:

Product Type:	Primary Antibodies
Applications:	WB
Recommended Dilution:	WB
Reactivity:	Human
Host:	Rabbit
Isotype:	IgG
Clonality:	Polyclonal
Immunogen:	The immunogen for anti-SPIRE2 antibody: synthetic peptide directed towards the N terminal of human SPIRE2. Synthetic peptide located within the following region: EAQTVQSLGFAIYRALDWGLDESEERELSPQLERLIDLMANNDESDSGCG
Formulation:	Liquid. Purified antibody supplied in 1x PBS buffer with 0.09% (w/v) sodium azide and 2% sucrose. <i>Note that this product is shipped as lyophilized powder to China customers.</i>
Conjugation:	Unconjugated
Storage:	Store at -20°C as received.
Stability:	Stable for 12 months from date of receipt.
Predicted Protein Size:	80 kDa
Gene Name:	spire type actin nucleation factor 2
Database Link:	NP_115827 Entrez Gene 84501 Human Q8WWL2
Background:	SPIRE2 acts as a actin nucleation factor, remains associated with the slow-growing pointed end of the new filament. It is involved in vesicle transport processes providing a novel link between actin organization and intracellular transport .
Synonyms:	Spir-2
Note:	Immunogen Sequence Homology: Rat: 100%; Horse: 100%; Human: 100%; Dog: 93%; Pig: 93%; Mouse: 93%; Zebrafish: 93%; Bovine: 86%; Rabbit: 86%
Protein Pathways:	Dorso-ventral axis formation



[View online »](#)

Product images:



WB Suggested Anti-SPIRE2 Antibody Titration:
0.2-1 ug/ml; ELISA Titer: 1:62500; Positive Control:
Human Liver