

## Product datasheet for **TA342928**

### SH3BP5 Rabbit Polyclonal Antibody

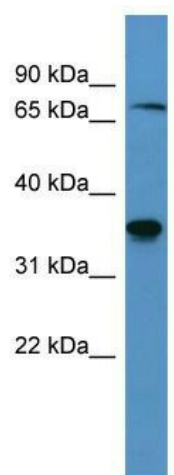
#### Product data:

Product Type:	Primary Antibodies
Applications:	WB
Recommended Dilution:	WB
Reactivity:	Human
Host:	Rabbit
Isotype:	IgG
Clonality:	Polyclonal
Immunogen:	The immunogen for anti-SH3BP5 antibody: synthetic peptide directed towards the C terminal of human SH3BP5. Synthetic peptide located within the following region: SGASSPECEVERGDRAEGAENKTSDKANNNRGLSSSSGSGGSSKSQSSTS
Formulation:	Liquid. Purified antibody supplied in 1x PBS buffer with 0.09% (w/v) sodium azide and 2% sucrose. <i>Note that this product is shipped as lyophilized powder to China customers.</i>
Conjugation:	Unconjugated
Storage:	Store at -20°C as received.
Stability:	Stable for 12 months from date of receipt.
Predicted Protein Size:	33 kDa
Gene Name:	SH3 domain binding protein 5
Database Link:	<a href="#">NP_001018009</a> <a href="#">Entrez Gene 9467 Human</a> <a href="#">O60239</a>
Background:	The function remains unknown.
Synonyms:	SAB; SH3BP-5
Note:	Immunogen Sequence Homology: Dog: 100%; Pig: 100%; Rat: 100%; Horse: 100%; Human: 100%; Rabbit: 100%; Guinea pig: 100%; Mouse: 93%; Bovine: 92%



[View online »](#)

## Product images:



WB Suggested Anti-SH3BP5 Antibody Titration:  
0.2-1 ug/ml; ELISA Titer: 1:62500; Positive Control:  
Human Liver