

## Product datasheet for **TA342926**

### SH2D1A Rabbit Polyclonal Antibody

#### Product data:

Product Type:	Primary Antibodies
Applications:	WB
Recommended Dilution:	WB
Reactivity:	Human
Host:	Rabbit
Isotype:	IgG
Clonality:	Polyclonal
Immunogen:	The immunogen for anti-SH2D1A antibody: synthetic peptide directed towards the C terminal of human SH2D1A. Synthetic peptide located within the following region: YFRKIKNLISAFQKPDQGIVPLQYPVEKKSSARSTQGTTGIREDPDVCL
Formulation:	Liquid. Purified antibody supplied in 1x PBS buffer with 0.09% (w/v) sodium azide and 2% sucrose. <i>Note that this product is shipped as lyophilized powder to China customers.</i>
Conjugation:	Unconjugated
Storage:	Store at -20°C as received.
Stability:	Stable for 12 months from date of receipt.
Predicted Protein Size:	14 kDa
Gene Name:	SH2 domain containing 1A
Database Link:	<a href="#">NP_002342</a> <a href="#">Entrez Gene 4068 Human</a> <a href="#">O60880</a>



[View online »](#)

**Background:** SH2D1A is a protein that plays a major role in the bidirectional stimulation of T and B cells. It associates with the signaling lymphocyte-activation molecule, thereby acting as an inhibitor of this transmembrane protein by blocking the recruitment of the SH2-domain-containing signal-transduction molecule SHP-2 to its docking site. This protein can also bind to other related surface molecules that are expressed on activated T, B and NK cells, thereby modifying signal transduction pathways in these cells. Mutations in SH2D1A gene cause lymphoproliferative syndrome X-linked type 1 or Duncan disease, a rare immunodeficiency characterized by extreme susceptibility to infection with Epstein-Barr virus, with symptoms including severe mononucleosis and malignant lymphoma.

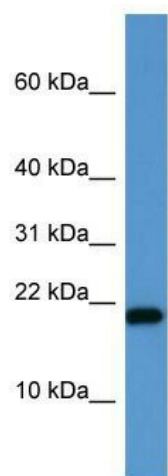
**Synonyms:** DSHP; EBVS; IMD5; LYP; MTCP1; SAP; SH2D1A; XLP; XLPD; XLPD1

**Note:** Immunogen Sequence Homology: Pig: 100%; Human: 100%; Rat: 93%; Horse: 92%; Bovine: 86%

**Protein Families:** Druggable Genome

**Protein Pathways:** Natural killer cell mediated cytotoxicity

### Product images:



WB Suggested Anti-SH2D1A Antibody Titration: 0.2-1 ug/ml; ELISA Titer: 1:312500; Positive Control: Jurkat cell lysate SH2D1A is strongly supported by BioGPS gene expression data to be expressed in Human Jurkat cells