

Product datasheet for **TA342925**

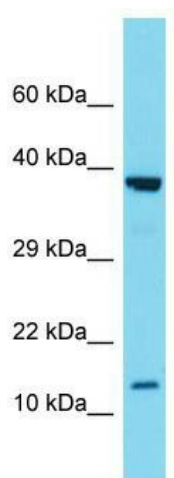
SCGB2A1 Rabbit Polyclonal Antibody

Product data:

| | |
|-------------------------|--|
| Product Type: | Primary Antibodies |
| Applications: | WB |
| Recommended Dilution: | WB |
| Reactivity: | Human |
| Host: | Rabbit |
| Isotype: | IgG |
| Clonality: | Polyclonal |
| Immunogen: | The immunogen for anti-SCGB2A1 antibody is: synthetic peptide directed towards the N-terminal region of Human SCGB2A1. Synthetic peptide located within the following region: LEDMVEKTINSDISIPEYKELLQEFIDSDAAAEAMGKFKQCFLNQSHRTL |
| Formulation: | Liquid. Purified antibody supplied in 1x PBS buffer with 0.09% (w/v) sodium azide and 2% sucrose. <i>Note that this product is shipped as lyophilized powder to China customers.</i> |
| Conjugation: | Unconjugated |
| Storage: | Store at -20°C as received. |
| Stability: | Stable for 12 months from date of receipt. |
| Predicted Protein Size: | 10 kDa |
| Gene Name: | secretoglobin family 2A member 1 |
| Database Link: | NP_002398 Entrez Gene 4246 Human O75556 |
| Background: | SCGB2A1 may bind androgens and other steroids, may also bind estramustine, a chemotherapeutic agent used for prostate cancer. It may be under transcriptional regulation of steroid hormones. |
| Synonyms: | LPHC; LPNC; MGB2; UGB3 |
| Note: | Immunogen Sequence Homology: Human: 100% |



[View online »](#)

Product images:

Host: Rabbit; Target Name: SCGB2A1; Sample
Tissue: Fetal Liver lysates; Antibody Dilution: 1.0
ug/ml