

Product datasheet for **TA342924**

RELM beta (RETNLB) Rabbit Polyclonal Antibody

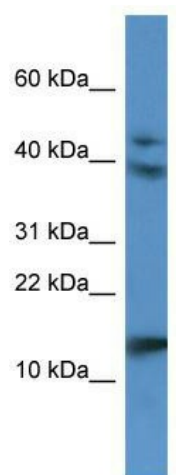
Product data:

Product Type:	Primary Antibodies
Applications:	WB
Recommended Dilution:	WB
Reactivity:	Human
Host:	Rabbit
Isotype:	IgG
Clonality:	Polyclonal
Immunogen:	The immunogen for anti-RETNLB antibody: synthetic peptide directed towards the N terminal of human RETNLB. Synthetic peptide located within the following region: CSLDSVMDKKIKDVLNSLEYSPSPISKKLSCASVKSQGRPSSCPAGMAVT
Formulation:	Liquid. Purified antibody supplied in 1x PBS buffer with 0.09% (w/v) sodium azide and 2% sucrose. <i>Note that this product is shipped as lyophilized powder to China customers.</i>
Conjugation:	Unconjugated
Storage:	Store at -20°C as received.
Stability:	Stable for 12 months from date of receipt.
Predicted Protein Size:	12 kDa
Gene Name:	resistin like beta
Database Link:	NP_115968 Entrez Gene 84666 Human Q9BQ08
Background:	RETNLB may play a role as hormone.
Synonyms:	FIZZ1; FIZZ2; HXCP2; RELM-beta; RELMb; RELMbeta; XCP2
Note:	Immunogen Sequence Homology: Human: 100%
Protein Families:	Secreted Protein



[View online »](#)

Product images:



WB Suggested Anti-RETNLB Antibody; Titration:
1.0 ug/ml; Positive Control: A549 Whole Cell