

Product datasheet for TA342923

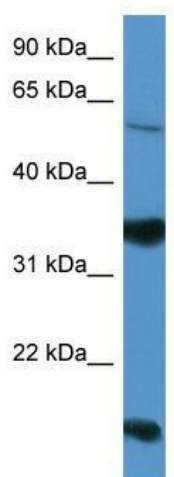
Netrin G2 (NTNG2) Rabbit Polyclonal Antibody

Product data:

Product Type:	Primary Antibodies
Applications:	WB
Recommended Dilution:	WB
Reactivity:	Human
Host:	Rabbit
Isotype:	IgG
Clonality:	Polyclonal
Immunogen:	The immunogen for anti-NTNG2 antibody: synthetic peptide directed towards the middle region of human NTNG2. Synthetic peptide located within the following region: YSRWAGSKKEKHVRFEVRDRFAIFAGPDLRNMDNLYTRLESAKGLKEFFT
Formulation:	Liquid. Purified antibody supplied in 1x PBS buffer with 0.09% (w/v) sodium azide and 2% sucrose.
Conjugation:	Unconjugated
Storage:	Store at -20°C as received.
Stability:	Stable for 12 months from date of receipt.
Predicted Protein Size:	60 kDa
Gene Name:	netrin G2
Database Link:	NP_115925 Entrez Gene 84628 Human Q96CW9
Background:	NTNG2 promotes neurite outgrowth of both axons and dendrites.
Synonyms:	bA479K20.1; LHLL9381; Lmmt2; NTNG1
Note:	Immunogen Sequence Homology: Dog: 100%; Pig: 100%; Rat: 100%; Horse: 100%; Human: 100%; Mouse: 100%; Bovine: 100%; Rabbit: 100%; Guinea pig: 93%; Zebrafish: 79%


[View online »](#)

Product images:



WB Suggested Anti-NTNG2 Antibody Titration:
0.2-1 ug/ml; ELISA Titer: 1:312500; Positive
Control: HepG2 cell lysate