

## Product datasheet for **TA342922**

### Netrin G1 (NTNG1) Rabbit Polyclonal Antibody

#### Product data:

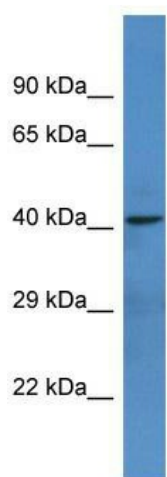
Product Type:	Primary Antibodies
Applications:	WB
Recommended Dilution:	WB
Reactivity:	Human
Host:	Rabbit
Isotype:	IgG
Clonality:	Polyclonal
Immunogen:	The immunogen for anti-NTNG1 antibody is: synthetic peptide directed towards the C-terminal region of HUMAN NTNG1. Synthetic peptide located within the following region: YAISDIKVRGRCKCNLHATVCVYDNSKLTCECEHNTTGPDCGKCKKKNYQG
Formulation:	Liquid. Purified antibody supplied in 1x PBS buffer with 0.09% (w/v) sodium azide and 2% sucrose. <i>Note that this product is shipped as lyophilized powder to China customers.</i>
Purification:	Affinity Purified
Conjugation:	Unconjugated
Storage:	Store at -20°C as received.
Stability:	Stable for 12 months from date of receipt.
Predicted Protein Size:	40 kDa
Gene Name:	netrin G1
Database Link:	<a href="#">NP_001106697</a> <a href="#">Entrez Gene 22854 Human Q9Y2I2</a>
Background:	Netrin G1 (NTNG1) belongs to a conserved family of proteins that act as axon guidance cues during vertebrate nervous system development.
Synonyms:	Lmnt1
Note:	Immunogen Sequence Homology: Dog: 100%; Pig: 100%; Rat: 100%; Horse: 100%; Human: 100%; Mouse: 100%; Bovine: 100%; Rabbit: 100%; Guinea pig: 100%; Zebrafish: 86%



[View online »](#)

Protein Pathways: Axon guidance

**Product images:**



Host: Rabbit; Target Name: NTNG1; Sample Tissue: U937 Whole Cell lysates; Antibody Dilution: 1.0 ug/ml