

Product datasheet for **TA342921**

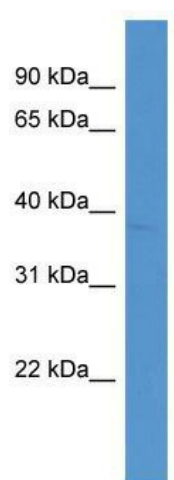
NT5C1A Rabbit Polyclonal Antibody

Product data:

Product Type:	Primary Antibodies
Applications:	WB
Recommended Dilution:	WB
Reactivity:	Human
Host:	Rabbit
Isotype:	IgG
Clonality:	Polyclonal
Immunogen:	The immunogen for anti-NT5C1A antibody: synthetic peptide directed towards the C terminal of human NT5C1A. Synthetic peptide located within the following region: AHGLDRFFEHEKAHENKPLAQGPLKGFLEALGRLQKKFYKGLRLECP
Formulation:	Liquid. Purified antibody supplied in 1x PBS buffer with 0.09% (w/v) sodium azide and 2% sucrose. <i>Note that this product is shipped as lyophilized powder to China customers.</i>
Conjugation:	Unconjugated
Storage:	Store at -20°C as received.
Stability:	Stable for 12 months from date of receipt.
Predicted Protein Size:	41 kDa
Gene Name:	5'-nucleotidase, cytosolic IA
Database Link:	NP_115915 Entrez Gene 84618 Human Q9BXI3
Background:	Cytosolic nucleotidases, such as NT5C1A, dephosphorylate nucleoside monophosphates .
Synonyms:	CN-I; CN-IA; CN1; CN1A; CN1
Note:	Immunogen Sequence Homology: Dog: 100%; Pig: 100%; Rat: 100%; Horse: 100%; Human: 100%; Mouse: 100%; Bovine: 100%; Rabbit: 100%; Zebrafish: 93%; Guinea pig: 93%
Protein Pathways:	Metabolic pathways, Nicotinate and nicotinamide metabolism, Purine metabolism, Pyrimidine metabolism



[View online »](#)

Product images:

WB Suggested Anti-NT5C1A Antibody Titration:
0.2-1 ug/ml; ELISA Titer: 1:312500; Positive
Control: HepG2 cell lysate