

Product datasheet for **TA342919**

MNK1 (MKNK1) Rabbit Polyclonal Antibody

Product data:

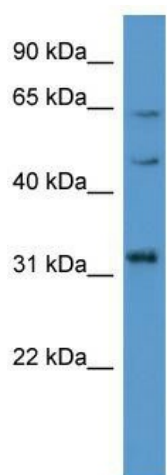
Product Type:	Primary Antibodies
Applications:	WB
Recommended Dilution:	WB
Reactivity:	Human
Host:	Rabbit
Isotype:	IgG
Clonality:	Polyclonal
Immunogen:	The immunogen for anti-MKNK1 antibody: synthetic peptide directed towards the C terminal of human MKNK1. Synthetic peptide located within the following region: HEENELAEPEALADGLCSMKLSPPCKSRLARRRALAQAGRGEDRSPPTA
Formulation:	Liquid. Purified antibody supplied in 1x PBS buffer with 0.09% (w/v) sodium azide and 2% sucrose. <i>Note that this product is shipped as lyophilized powder to China customers.</i>
Conjugation:	Unconjugated
Storage:	Store at -20°C as received.
Stability:	Stable for 12 months from date of receipt.
Predicted Protein Size:	51 kDa
Gene Name:	MAP kinase interacting serine/threonine kinase 1
Database Link:	NP_003675 Entrez Gene 8569 Human Q9BUB5
Background:	MKNK1 may play a role in the response to environmental stress and cytokines. It appears to regulate transcription by phosphorylating EIF4E, thus increasing the affinity of this protein for the 7-methylguanosine-containing mRNA cap.
Synonyms:	MNK1
Note:	Immunogen Sequence Homology: Human: 100%
Protein Families:	Druggable Genome, Protein Kinase



[View online »](#)

Protein Pathways: Insulin signaling pathway, MAPK signaling pathway

Product images:



WB Suggested Anti-MKNK1 Antibody Titration:
0.2-1 ug/ml; ELISA Titer: 1:312500; Positive
Control: 293T cell lysate MKNK1 is supported by
BioGPS gene expression data to be expressed in
HEK293T