

Product datasheet for **TA342918**

MGST3 Rabbit Polyclonal Antibody

Product data:

Product Type:	Primary Antibodies
Applications:	WB
Recommended Dilution:	WB
Reactivity:	Human
Host:	Rabbit
Isotype:	IgG
Clonality:	Polyclonal
Immunogen:	The immunogen for anti-MGST3 antibody: synthetic peptide directed towards the N terminal of human MGST3. Synthetic peptide located within the following region: LAINVSKARKKYKVEYPIMYSTDPENGHIFNCIQRAHQNTLEVYPPFLFF
Formulation:	Liquid. Purified antibody supplied in 1x PBS buffer with 0.09% (w/v) sodium azide and 2% sucrose. <i>Note that this product is shipped as lyophilized powder to China customers.</i>
Conjugation:	Unconjugated
Storage:	Store at -20°C as received.
Stability:	Stable for 12 months from date of receipt.
Predicted Protein Size:	16 kDa
Gene Name:	microsomal glutathione S-transferase 3
Database Link:	NP_004519 Entrez Gene 4259 Human O14880
Background:	The MAPEG (Membrane Associated Proteins in Eicosanoid and Glutathione metabolism) family consists of six human proteins, several of which are involved the production of leukotrienes and prostaglandin E, important mediators of inflammation. MAPEG is an enzyme which catalyzes the conjugation of leukotriene A4 and reduced glutathione to produce leukotriene C4. This enzyme also demonstrates glutathione-dependent peroxidase activity towards lipid hydroperoxides.
Synonyms:	GST-III



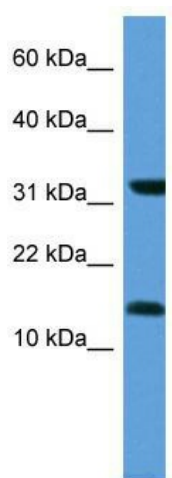
[View online »](#)

Note: Immunogen Sequence Homology: Rat: 100%; Goat: 100%; Human: 100%; Bovine: 100%; Dog: 93%; Pig: 93%; Horse: 93%; Mouse: 93%; Rabbit: 93%; Guinea pig: 93%; Zebrafish: 79%

Protein Families: Druggable Genome, Transmembrane

Protein Pathways: Drug metabolism - cytochrome P450, Glutathione metabolism, Metabolism of xenobiotics by cytochrome P450

Product images:



WB Suggested Anti-MGST3 Antibody Titration:
0.2-1 ug/ml; ELISA Titer: 1:312500; Positive
Control: Human heart