

Product datasheet for **TA342916**

MF12 (MELTF) Rabbit Polyclonal Antibody

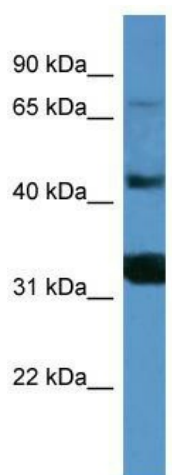
Product data:

Product Type:	Primary Antibodies
Applications:	IF, WB
Recommended Dilution:	IF, WB
Reactivity:	Human
Host:	Rabbit
Isotype:	IgG
Clonality:	Polyclonal
Immunogen:	The immunogen for anti-MF12 antibody: synthetic peptide directed towards the C terminal of human MF12. Synthetic peptide located within the following region: CVPVNNPKNYPSSLCALCVGDEQGRNKCVGNSQERYYGIRGAFRCLVENA
Formulation:	Liquid. Purified antibody supplied in 1x PBS buffer with 0.09% (w/v) sodium azide and 2% sucrose. <i>Note that this product is shipped as lyophilized powder to China customers.</i>
Conjugation:	Unconjugated
Storage:	Store at -20°C as received.
Stability:	Stable for 12 months from date of receipt.
Predicted Protein Size:	78 kDa
Gene Name:	melanotransferrin
Database Link:	NP_005920 Entrez Gene 4241 Human P08582
Background:	MF12 is a cell-surface glycoprotein found on melanoma cells. The protein shares sequence similarity and iron-binding properties with members of the transferrin superfamily. The importance of the iron binding function has not yet been identified.
Synonyms:	CD228; MAP97; MTF; MTF1
Note:	Immunogen Sequence Homology: Pig: 100%; Human: 100%; Bovine: 100%; Horse: 93%; Rabbit: 93%; Rat: 86%; Mouse: 86%; Dog: 79%
Protein Families:	Druggable Genome



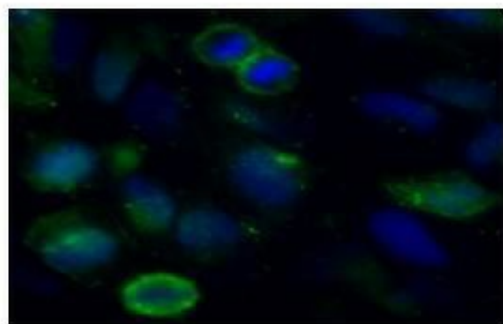
[View online »](#)

Product images:



MFI2

WB Suggested Anti-MFI2 Antibody Titration: 0.2-1 ug/ml; ELISA Titer: 1:312500; Positive Control: HepG2 cell lysate



Green: MFI2
Blue: DAPI

Sample Type: HeLa cells Primary Antibody Dilution: 1:50 Secondary Antibody: Goat anti-rabbit-Alexa Fluor 488 Secondary Antibody Dilution: 1:800 Color/Signal Descriptions: Green: MFI2 Blue: DAPI Gene Name: MFI2