

Product datasheet for **TA342915**

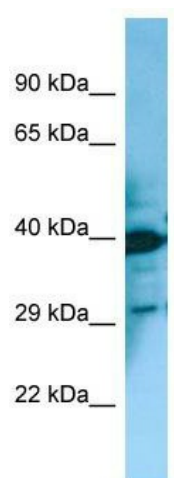
MCH2 (MCHR2) Rabbit Polyclonal Antibody

Product data:

Product Type:	Primary Antibodies
Applications:	WB
Recommended Dilution:	WB
Reactivity:	Human
Host:	Rabbit
Isotype:	IgG
Clonality:	Polyclonal
Immunogen:	The immunogen for anti-MCHR2 antibody is: synthetic peptide directed towards the C-terminal region of Human MCHR2. Synthetic peptide located within the following region: YVGYLSICLSYASSSINPFLYILLSGNFQKRLPQIQRRATEKEINNMGN
Formulation:	Liquid. Purified antibody supplied in 1x PBS buffer with 0.09% (w/v) sodium azide and 2% sucrose. <i>Note that this product is shipped as lyophilized powder to China customers.</i>
Conjugation:	Unconjugated
Storage:	Store at -20°C as received.
Stability:	Stable for 12 months from date of receipt.
Predicted Protein Size:	39 kDa
Gene Name:	melanin concentrating hormone receptor 2
Database Link:	NP_115892 Entrez Gene 84539 Human Q969V1
Background:	MCHR2 is a receptor for melanin-concentrating hormone, coupled to G proteins that activate phosphoinositide hydrolysis.
Synonyms:	GPR145; GPRv17; MCH-2R; MCH-R2; MCH2; MCH2R; MCHR-2; SLT
Note:	Immunogen Sequence Homology: Human: 100%; Bovine: 85%
Protein Families:	Druggable Genome, GPCR, Transmembrane
Protein Pathways:	Neuroactive ligand-receptor interaction



[View online »](#)

Product images:

WB Suggested Anti-MCHR2 Antibody; Titration:
1.0 ug/ml; Positive Control: Fetal Bladder