

## Product datasheet for **TA342913**

### MAP3K12 binding inhibitory protein 1 (MBIP) Rabbit Polyclonal Antibody

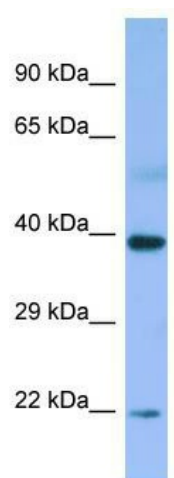
#### Product data:

Product Type:	Primary Antibodies
Applications:	WB
Recommended Dilution:	WB
Reactivity:	Human
Host:	Rabbit
Isotype:	IgG
Clonality:	Polyclonal
Immunogen:	The immunogen for anti-MBIP antibody is: synthetic peptide directed towards the N-terminal region of Human MBIP. Synthetic peptide located within the following region: EVNDKFSIGDLQEEEKHKESDLRDVKKTKIHFDPPEVVQIKAGKAEIDRRI
Formulation:	Liquid. Purified antibody supplied in 1x PBS buffer with 0.09% (w/v) sodium azide and 2% sucrose.
Conjugation:	Unconjugated
Storage:	Store at -20°C as received.
Stability:	Stable for 12 months from date of receipt.
Predicted Protein Size:	39 kDa
Gene Name:	MAP3K12 binding inhibitory protein 1
Database Link:	<a href="#">NP_057670</a> <a href="#">Entrez Gene 51562 Human</a> <a href="#">Q9NS73</a>
Background:	MBIP inhibits the MAP3K12 activity to induce the activation of the JNK/SAPK pathway. Component of the ATAC complex, a complex with histone acetyltransferase activity on histones H3 and H4.
Synonyms:	MAP3K12 binding inhibitory protein 1; MUK-binding inhibitory protein; OTTHUMP00000178844
Note:	Immunogen Sequence Homology: Human: 100%; Bovine: 86%; Pig: 79%; Horse: 79%; Rabbit: 79%; Guinea pig: 79%



[View online »](#)

## Product images:



WB Suggested Anti-MBIP Antibody; Titration: 1.0 ug/ml; Positive Control: Fetal Small Intestine