

Product datasheet for **TA342907**

MAPKAP Kinase 2 (MAPKAPK2) Rabbit Polyclonal Antibody

Product data:

Product Type:	Primary Antibodies
Applications:	WB
Recommended Dilution:	WB
Reactivity:	Human, Mouse
Host:	Rabbit
Isotype:	IgG
Clonality:	Polyclonal
Immunogen:	The immunogen for anti-MAPKAPK2 antibody is: synthetic peptide directed towards the C-terminal region of Human MAPKAPK2. Synthetic peptide located within the following region: MNHPWIMQSTKVPQTPLHTSRVLKEDKERWEDVKGCLHDKNSDQATWLTR
Formulation:	Liquid. Purified antibody supplied in 1x PBS buffer with 0.09% (w/v) sodium azide and 2% sucrose. <i>Note that this product is shipped as lyophilized powder to China customers.</i>
Conjugation:	Unconjugated
Storage:	Store at -20°C as received.
Stability:	Stable for 12 months from date of receipt.
Predicted Protein Size:	42 kDa
Gene Name:	mitogen-activated protein kinase-activated protein kinase 2
Database Link:	NP_004750 Entrez Gene 17164 Mouse Entrez Gene 9261 Human P49137
Background:	MAPKAPK2 is a member of the Ser/Thr protein kinase family. This kinase is regulated through direct phosphorylation by p38 MAP kinase. In conjunction with p38 MAP kinase, this kinase is known to be involved in many cellular processes including stress and inflammatory responses, nuclear export, gene expression regulation and cell proliferation. Heat shock protein HSP27 was shown to be one of the substrates of this kinase in vivo.
Synonyms:	MAPKAP-K2; MK-2; MK2



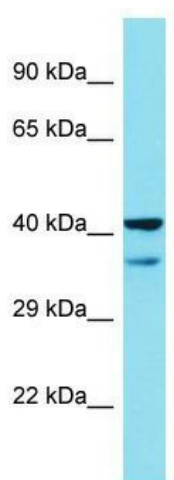
[View online »](#)

Note: Immunogen Sequence Homology: Dog: 100%; Pig: 100%; Rat: 100%; Horse: 100%; Human: 100%; Mouse: 100%; Bovine: 100%; Rabbit: 100%; Guinea pig: 100%; Yeast: 83%; Zebrafish: 79%

Protein Families: Druggable Genome, Protein Kinase

Protein Pathways: MAPK signaling pathway, Neurotrophin signaling pathway, VEGF signaling pathway

Product images:



Host: Rabbit; Target Name: MAPKAPK2; Sample Tissue: A549 Whole Cell lysates; Antibody Dilution: 1.0 ug/ml