

Product datasheet for **TA342905**

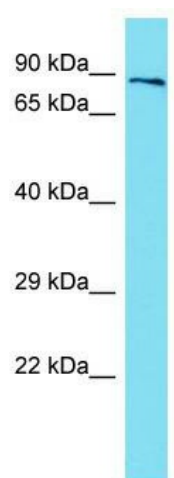
MAP6 Rabbit Polyclonal Antibody

Product data:

Product Type:	Primary Antibodies
Applications:	WB
Recommended Dilution:	WB
Reactivity:	Human
Host:	Rabbit
Isotype:	IgG
Clonality:	Polyclonal
Immunogen:	The immunogen for anti-MAP6 antibody is: synthetic peptide directed towards the middle region of Human MAP6. Synthetic peptide located within the following region: IRSLYSEPFKEPPKVEKPSVQSSKPKKTSASHKPTRKAKDKQAVSGQAAK
Formulation:	Liquid. Purified antibody supplied in 1x PBS buffer with 0.09% (w/v) sodium azide and 2% sucrose. <i>Note that this product is shipped as lyophilized powder to China customers.</i>
Conjugation:	Unconjugated
Storage:	Store at -20°C as received.
Stability:	Stable for 12 months from date of receipt.
Predicted Protein Size:	86 kDa
Gene Name:	microtubule associated protein 6
Database Link:	NP_149052 Entrez Gene 4135 Human Q96JE9
Background:	This gene encodes a microtubule-associated protein. The encoded protein is a calmodulin-binding and calmodulin-regulated protein that is involved in microtubule stabilization.
Synonyms:	MAP6-N; MTAP6; N-STOP; STOP
Note:	Immunogen Sequence Homology: Pig: 100%; Human: 100%; Guinea pig: 100%; Horse: 93%; Rabbit: 93%; Dog: 86%; Rat: 86%; Mouse: 86%; Bovine: 79%



[View online »](#)

Product images:

Host: Rabbit; Target Name: MAP6; Sample Tissue: Placenta lysates; Antibody Dilution: 1.0 ug/ml