

Product datasheet for **TA342904**

MAP4 Rabbit Polyclonal Antibody

Product data:

Product Type:	Primary Antibodies
Applications:	WB
Recommended Dilution:	WB
Reactivity:	Human
Host:	Rabbit
Isotype:	IgG
Clonality:	Polyclonal
Immunogen:	The immunogen for anti-MAP4 antibody: synthetic peptide directed towards the N terminal of human MAP4. Synthetic peptide located within the following region: LKETERASPIKMDLAPSKDMGPPKENKKETERASPIKMDLAPSKDMGPPK
Formulation:	Liquid. Purified antibody supplied in 1x PBS buffer with 0.09% (w/v) sodium azide and 2% sucrose. <i>Note that this product is shipped as lyophilized powder to China customers.</i>
Conjugation:	Unconjugated
Storage:	Store at -20°C as received.
Stability:	Stable for 12 months from date of receipt.
Predicted Protein Size:	121 kDa
Gene Name:	microtubule associated protein 4
Database Link:	NP_002366 Entrez Gene 4134 Human P27816
Background:	MAP4 is a major non-neuronal microtubule-associated protein. This protein contains a domain similar to the microtubule-binding domains of neuronal microtubule-associated protein (MAP2) and microtubule-associated protein tau (MAPT/TAU). This protein promotes microtubule assembly, and has been shown to counteract destabilization of interphase microtubule catastrophe promotion. Cyclin B was found to interact with this protein, which targets cell division cycle 2 (CDC2) kinase to microtubules. The phosphorylation of this protein affects microtubule properties and cell cycle progression.

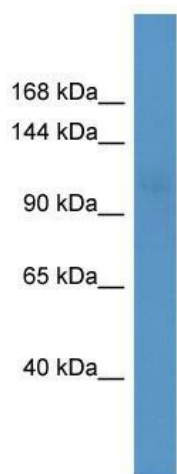


[View online »](#)

Synonyms: DKFZp779A1753; MGC8617

Note: Immunogen Sequence Homology: Human: 100%

Product images:



WB Suggested Anti-MAP4 Antibody Titration: 0.2-1 ug/ml; ELISA Titer: 1:312500; Positive Control: Jurkat cell lysate