

Product datasheet for **TA342903**

MAP3K10 Rabbit Polyclonal Antibody

Product data:

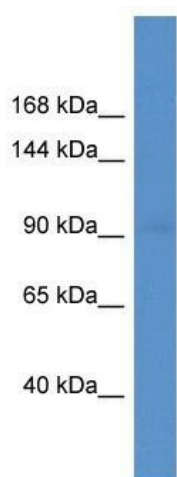
Product Type:	Primary Antibodies
Applications:	WB
Recommended Dilution:	WB
Reactivity:	Human
Host:	Rabbit
Isotype:	IgG
Clonality:	Polyclonal
Immunogen:	The immunogen for anti-MAP3K10 antibody: synthetic peptide directed towards the C terminal of human MAP3K10. Synthetic peptide located within the following region: TLTFAPRRPAASRPRLDPWKLVSFGRTLISPPSRPDTPESPGPPSVQP
Formulation:	Liquid. Purified antibody supplied in 1x PBS buffer with 0.09% (w/v) sodium azide and 2% sucrose.
Conjugation:	Unconjugated
Storage:	Store at -20°C as received.
Stability:	Stable for 12 months from date of receipt.
Predicted Protein Size:	104 kDa
Gene Name:	mitogen-activated protein kinase kinase kinase 10
Database Link:	NP_002437 Entrez Gene 4294 Human Q02779
Background:	The protein encoded by this gene is a member of the serine/threonine kinase family. This kinase has been shown to activate MAPK8/JNK and MKK4/SEK1, and this kinase itself can be phosphorylated, and thus activated by JNK kinases. This kinase functions preferentially on the JNK signaling pathway, and is reported to be involved in nerve growth factor (NGF) induced neuronal apoptosis.
Synonyms:	MEKK10; MLK2; MST
Note:	Immunogen Sequence Homology: Dog: 100%; Pig: 100%; Rat: 100%; Human: 100%; Mouse: 100%; Bovine: 93%; Guinea pig: 93%; Rabbit: 86%



[View online »](#)

Protein Families: Druggable Genome, Protein Kinase

Product images:



WB Suggested Anti-MAP3K10 Antibody; Titration:
1.0 ug/ml; Positive Control: THP-1 Whole Cell