

Product datasheet for **TA342900**

Lysozyme (LYZ) Rabbit Polyclonal Antibody

Product data:

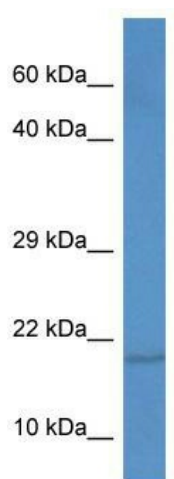
Product Type:	Primary Antibodies
Applications:	WB
Recommended Dilution:	WB
Reactivity:	Human
Host:	Rabbit
Isotype:	IgG
Clonality:	Polyclonal
Immunogen:	The immunogen for anti-LYZ antibody: synthetic peptide directed towards the C terminal of human LYZ. Synthetic peptide located within the following region: HLSCSALLQDNIADAVACAKRVVRDPQGIRAWVAWRNRCQNRDVRQYVQG
Formulation:	Liquid. Purified antibody supplied in 1x PBS buffer with 0.09% (w/v) sodium azide and 2% sucrose. <i>Note that this product is shipped as lyophilized powder to China customers.</i>
Conjugation:	Unconjugated
Storage:	Store at -20°C as received.
Stability:	Stable for 12 months from date of receipt.
Predicted Protein Size:	15 kDa
Gene Name:	lysozyme
Database Link:	NP_000230 Entrez Gene 4069 Human P61626
Background:	LYZ is a human lysozyme, whose natural substrate is the bacterial cell wall peptidoglycan (cleaving the beta[1-4]glycosidic linkages between N-acetylmuramic acid and N-acetylglucosamine). Lysozyme is one of the anti-microbial agents found in human milk, and is also present in spleen, lung, kidney, white blood cells, plasma, saliva, and tears. Missense mutations in LYZ have been identified in heritable renal amyloidosis.
Synonyms:	LYZF1; LZM
Note:	Immunogen Sequence Homology: Human: 100%; Bovine: 79%; Pig; Horse; Guinea pig



[View online »](#)

Protein Families: Druggable Genome

Product images:



WB Suggested Anti-LYZ Antibody; Titration: 1.0 ug/ml; Positive Control: ACHN Whole Cell