

Product datasheet for **TA342899**

LTK Rabbit Polyclonal Antibody

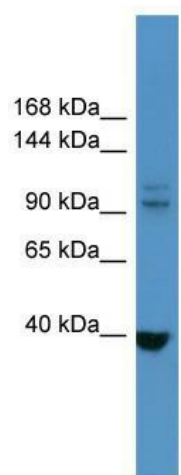
Product data:

Product Type:	Primary Antibodies
Applications:	WB
Recommended Dilution:	WB
Reactivity:	Human
Host:	Rabbit
Isotype:	IgG
Clonality:	Polyclonal
Immunogen:	The immunogen for anti-LTK antibody: synthetic peptide directed towards the N terminal of human LTK. Synthetic peptide located within the following region: GGGGRAYLRPRDRGRTQASPEKLENRSEAPGSGGRGGAAGGGGGWTSRAP
Formulation:	Liquid. Purified antibody supplied in 1x PBS buffer with 0.09% (w/v) sodium azide and 2% sucrose. <i>Note that this product is shipped as lyophilized powder to China customers.</i>
Conjugation:	Unconjugated
Storage:	Store at -20°C as received.
Stability:	Stable for 12 months from date of receipt.
Predicted Protein Size:	92 kDa
Gene Name:	leukocyte receptor tyrosine kinase
Database Link:	NP_002335 Entrez Gene 4058 Human P29376
Background:	LTK is a member of the ros/insulin receptor family of tyrosine kinases. Tyrosine-specific phosphorylation of proteins is a key to the control of diverse pathways leading to cell growth and differentiation.
Synonyms:	TYK1
Note:	Immunogen Sequence Homology: Human: 100%; Pig: 93%; Rabbit: 93%; Guinea pig: 93%; Mouse: 79%
Protein Families:	Druggable Genome, Protein Kinase, Transmembrane



[View online »](#)

Product images:



WB Suggested Anti-LTK Antibody Titration: 0.2-1 ug/ml; ELISA Titer: 1:62500; Positive Control: HeLa cell lysate