

## Product datasheet for **TA342898**

### LTBP1 Rabbit Polyclonal Antibody

#### Product data:

Product Type:	Primary Antibodies
Applications:	WB
Recommended Dilution:	WB
Reactivity:	Human
Host:	Rabbit
Isotype:	IgG
Clonality:	Polyclonal
Immunogen:	The immunogen for anti-LTBP1 antibody: synthetic peptide directed towards the C terminal of human LTBP1. Synthetic peptide located within the following region: NVCANGDCSNLEGSYMCSCHKGYTRTPDHKHCRDIDECQQGNLCVNGQCK
Formulation:	Liquid. Purified antibody supplied in 1x PBS buffer with 0.09% (w/v) sodium azide and 2% sucrose. <i>Note that this product is shipped as lyophilized powder to China customers.</i>
Conjugation:	Unconjugated
Storage:	Store at -20°C as received.
Stability:	Stable for 12 months from date of receipt.
Predicted Protein Size:	154 kDa
Gene Name:	latent transforming growth factor beta binding protein 1
Database Link:	<a href="#">NP_000618</a> <a href="#">Entrez Gene 4052 Human</a> <a href="#">Q14766</a>
Background:	The protein encoded by this gene belongs to the family of latent TGF-beta binding proteins (LTBPs). The secretion and activation of TGF-betas is regulated by their association with latency-associated proteins and with latent TGF-beta binding proteins. The product of this gene targets latent complexes of transforming growth factor beta to the extracellular matrix, where the latent cytokine is subsequently activated by several different mechanisms.
Synonyms:	MGC163161



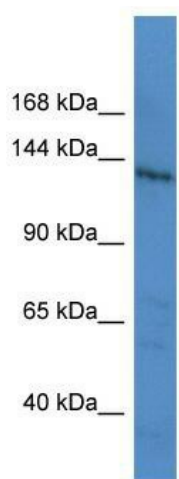
[View online »](#)

**Note:** Immunogen Sequence Homology: Human: 100%; Dog: 92%; Bovine: 92%; Rabbit: 92%; Horse: 86%; Pig: 83%; Rat: 83%; Mouse: 83%; Guinea pig: 83%

**Protein Families:** Druggable Genome, Secreted Protein

**Protein Pathways:** TGF-beta signaling pathway

**Product images:**



WB Suggested Anti-LTBP1 Antibody Titration: 0.2-1 ug/ml; ELISA Titer: 1:1562500; Positive Control: HepG2 cell lysate