

## Product datasheet for **TA342896**

### Lipoprotein a (LPA) Rabbit Polyclonal Antibody

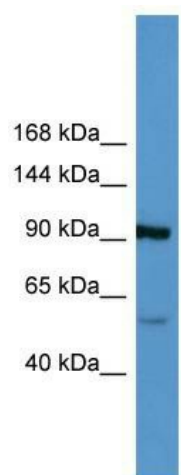
#### Product data:

Product Type:	Primary Antibodies
Applications:	WB
Recommended Dilution:	WB
Reactivity:	Human
Host:	Rabbit
Isotype:	IgG
Clonality:	Polyclonal
Immunogen:	The immunogen for anti-LPA antibody: synthetic peptide directed towards the middle region of human LPA. Synthetic peptide located within the following region: SVRWYCNLTRCPVTESSVLTTPVAPVPSTEAPSEQAPPEKSPVVQDCY
Formulation:	Liquid. Purified antibody supplied in 1x PBS buffer with 0.09% (w/v) sodium azide and 2% sucrose. <i>Note that this product is shipped as lyophilized powder to China customers.</i>
Conjugation:	Unconjugated
Storage:	Store at -20°C as received.
Stability:	Stable for 12 months from date of receipt.
Predicted Protein Size:	120 kDa
Gene Name:	lipoprotein(a)
Database Link:	<a href="#">NP_005568</a> <a href="#">Entrez Gene 4018 Human</a>
Background:	LPA is a serine proteinase that inhibits the activity of tissue-type plasminogen activator I. The protein constitutes a substantial portion of lipoprotein(a) and is proteolytically cleaved, resulting in fragments that attach to atherosclerotic lesions and promote thrombogenesis. Elevated plasma levels of this protein are linked to atherosclerosis. Depending on the individual, the protein contains 2-43 copies of kringle-type domains.
Synonyms:	AK38; APOA; LP
Note:	Immunogen Sequence Homology: Human: 100%
Protein Families:	Druggable Genome



[View online »](#)

Product images:



WB Suggested Anti-LPA Antibody Titration: 0.2-1 ug/ml; ELISA Titer: 1:312500; Positive Control: Jurkat cell lysate