

Product datasheet for **TA342895**

LOXL3 Rabbit Polyclonal Antibody

Product data:

Product Type:	Primary Antibodies
Applications:	WB
Recommended Dilution:	WB
Reactivity:	Human
Host:	Rabbit
Isotype:	IgG
Clonality:	Polyclonal
Immunogen:	The immunogen for anti-LOXL3 antibody: synthetic peptide directed towards the middle region of human LOXL3. Synthetic peptide located within the following region: AASSGQKKQQSKPQGEARVRLKGGAHPGEGRVEVLKASTWGTVCDRKWD
Formulation:	Liquid. Purified antibody supplied in 1x PBS buffer with 0.09% (w/v) sodium azide and 2% sucrose. <i>Note that this product is shipped as lyophilized powder to China customers.</i>
Conjugation:	Unconjugated
Storage:	Store at -20°C as received.
Stability:	Stable for 12 months from date of receipt.
Predicted Protein Size:	80 kDa
Gene Name:	lysyl oxidase like 3
Database Link:	NP_115992 Entrez Gene 84695 Human P58215
Background:	LOXL3 is a member of the lysyl oxidase gene family. The prototypic member of the family is essential to the biogenesis of connective tissue, encoding an extracellular copper-dependent amine oxidase that catalyses the first step in the formation of crosslinks in collagens and elastin. A highly conserved amino acid sequence at the C-terminus end appears to be sufficient for amine oxidase activity, suggesting that each family member may retain this function. The N-terminus is poorly conserved and may impart additional roles in developmental regulation, senescence, tumor suppression, cell growth control, and chemotaxis to each member of the family.



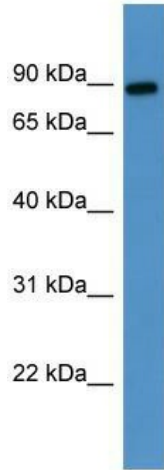
[View online »](#)

Synonyms: LOXL

Note: Immunogen Sequence Homology: Human: 100%; Dog: 93%; Pig: 93%; Rat: 93%; Horse: 93%; Bovine: 93%; Rabbit: 93%; Mouse: 92%; Guinea pig: 92%

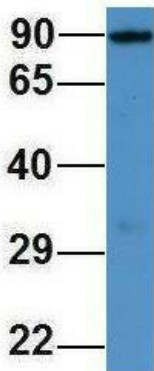
Protein Families: Druggable Genome

Product images:



WB Suggested Anti-LOXL3 Antibody Titration: 0.2-1 ug/ml; ELISA Titer: 1:1562500; Positive Control: Human Placenta

LOXL3



Rabbit Anti-LOXL3
 Sample Type: Human 293T
 Antibody Concentration: 1ug/mL

Host: Rabbit; Target Name: LOXL3; Sample Tissue: 293T; Antibody Dilution: 1.0 ug/ml