

## Product datasheet for **TA342894**

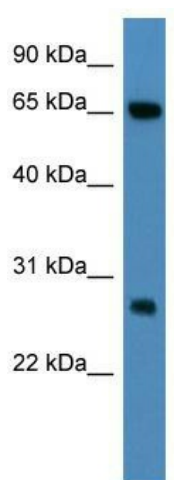
### KBTBD8 Rabbit Polyclonal Antibody

#### Product data:

Product Type:	Primary Antibodies
Applications:	WB
Recommended Dilution:	WB
Reactivity:	Human
Host:	Rabbit
Isotype:	IgG
Clonality:	Polyclonal
Immunogen:	The immunogen for anti-KBTBD8 antibody: synthetic peptide directed towards the N terminal of human KBTBD8. Synthetic peptide located within the following region: CHRNVLAAISPYFRSMFTSGLTESTQKEVRIVGVEAESMDLVLNYAYTSR
Formulation:	Liquid. Purified antibody supplied in 1x PBS buffer with 0.09% (w/v) sodium azide and 2% sucrose. <i>Note that this product is shipped as lyophilized powder to China customers.</i>
Conjugation:	Unconjugated
Storage:	Store at -20°C as received.
Stability:	Stable for 12 months from date of receipt.
Predicted Protein Size:	66 kDa
Gene Name:	kelch repeat and BTB domain containing 8
Database Link:	<a href="#">NP_115894</a> <a href="#">Entrez Gene 84541 Human</a> <a href="#">Q8NFY9</a>
Background:	The function remains unknown.
Synonyms:	TA-KRP
Note:	Immunogen Sequence Homology: Dog: 100%; Pig: 100%; Rat: 100%; Horse: 100%; Human: 100%; Mouse: 100%; Bovine: 100%; Guinea pig: 100%; Rabbit: 93%; Zebrafish: 86%



[View online »](#)

**Product images:**

WB Suggested Anti-KBTBD8 Antibody Titration:  
0.2-1 ug/ml; ELISA Titer: 1:1562500; Positive  
Control: 721\_B cell lysate