

## Product datasheet for **TA342893**

### JPH4 Rabbit Polyclonal Antibody

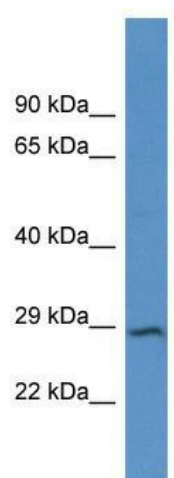
#### Product data:

Product Type:	Primary Antibodies
Applications:	WB
Recommended Dilution:	WB
Reactivity:	Human
Host:	Rabbit
Isotype:	IgG
Clonality:	Polyclonal
Immunogen:	The immunogen for anti-JPH4 antibody is: synthetic peptide directed towards the C-terminal region of HUMAN JPH4. Synthetic peptide located within the following region: AGYEAEDEAGMQGPGPRDGSPLLGGCSDSSGSLREEEGEDEEPLPLRAP
Formulation:	Liquid. Purified antibody supplied in 1x PBS buffer with 0.09% (w/v) sodium azide and 2% sucrose. <i>Note that this product is shipped as lyophilized powder to China customers.</i>
Purification:	Affinity Purified
Conjugation:	Unconjugated
Storage:	Store at -20°C as received.
Stability:	Stable for 12 months from date of receipt.
Predicted Protein Size:	32 kDa
Gene Name:	junctophilin 4
Database Link:	<a href="#">NP_115828</a> <a href="#">Entrez Gene 84502 Human</a> <a href="#">Q96JJ6</a>
Background:	The function of this protein remains unknown.
Synonyms:	JP4; JPHL1
Note:	Immunogen Sequence Homology: Pig: 100%; Rat: 100%; Horse: 100%; Human: 100%; Mouse: 100%; Bovine: 100%; Rabbit: 100%; Guinea pig: 100%



[View online »](#)

## Product images:



Host: Rabbit; Target Name: JPH4; Sample Tissue: U937 Whole Cell lysates; Antibody Dilution: 1.0 ug/ml