

Product datasheet for **TA342892**

IL1F10 Rabbit Polyclonal Antibody

Product data:

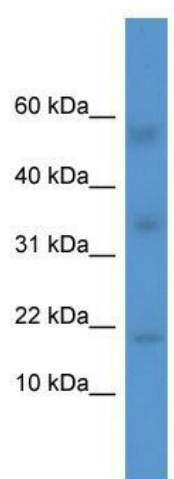
Product Type:	Primary Antibodies
Applications:	WB
Recommended Dilution:	WB
Reactivity:	Human
Host:	Rabbit
Isotype:	IgG
Clonality:	Polyclonal
Immunogen:	The immunogen for anti-IL1F10 antibody: synthetic peptide directed towards the middle region of human IL1F10. Synthetic peptide located within the following region: SRCLACVETEEGPSLQLEDVNIEELYKGGEEATRFTFFQSSSGSAFRLEA
Formulation:	Liquid. Purified antibody supplied in 1x PBS buffer with 0.09% (w/v) sodium azide and 2% sucrose. <i>Note that this product is shipped as lyophilized powder to China customers.</i>
Conjugation:	Unconjugated
Storage:	Store at -20°C as received.
Stability:	Stable for 12 months from date of receipt.
Predicted Protein Size:	17 kDa
Gene Name:	interleukin 1 family member 10 (theta)
Database Link:	NP_115945 Entrez Gene 84639 Human Q8WWZ1
Background:	The protein encoded by this gene is a member of the interleukin 1 cytokine family. This gene and eight other interleukin 1 family genes form a cytokine gene cluster on chromosome 2. This cytokine is thought to participate in a network of interleukin 1 family members to regulate adapted and innate immune responses.
Synonyms:	FIL1-theta; FKSG75; IL-1HY2; IL-38; IL1-theta; IL1HY2
Note:	Immunogen Sequence Homology: Human: 100%; Pig: 93%; Rat: 93%; Bovine: 93%; Rabbit: 93%; Guinea pig: 93%; Dog: 86%; Horse: 86%



[View online »](#)

Protein Families: Druggable Genome, Secreted Protein

Product images:



WB Suggested Anti-IL1F10 Antibody Titration: 0.2-1 ug/ml; ELISA Titer: 1:312500; Positive Control: Human Liver