

Product datasheet for **TA342891**

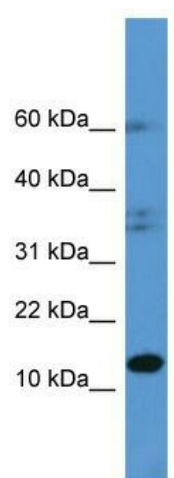
HINT2 Rabbit Polyclonal Antibody

Product data:

Product Type:	Primary Antibodies
Applications:	WB
Recommended Dilution:	WB
Reactivity:	Human
Host:	Rabbit
Isotype:	IgG
Clonality:	Polyclonal
Immunogen:	The immunogen for anti-HINT2 antibody: synthetic peptide directed towards the C terminal of human HINT2. Synthetic peptide located within the following region: RISQAEEDQQLLGHLLLVAKQTAKAEGLDGYRLVINDGKLGASVYHL
Formulation:	Liquid. Purified antibody supplied in 1x PBS buffer with 0.09% (w/v) sodium azide and 2% sucrose. <i>Note that this product is shipped as lyophilized powder to China customers.</i>
Conjugation:	Unconjugated
Storage:	Store at -20°C as received.
Stability:	Stable for 12 months from date of receipt.
Predicted Protein Size:	17 kDa
Gene Name:	histidine triad nucleotide binding protein 2
Database Link:	NP_115982 Entrez Gene 84681 Human Q9BX68
Background:	Histidine triad proteins, such as HINT2, are nucleotide hydrolases and transferases that act on the alpha-phosphate of ribonucleotides
Synonyms:	HIT-17
Note:	Immunogen Sequence Homology: Human: 100%; Dog: 93%; Pig: 93%; Horse: 93%; Bovine: 93%; Rabbit: 93%; Guinea pig: 86%



[View online »](#)

Product images:

WB Suggested Anti-HINT2 Antibody Titration: 0.2-1 ug/ml; ELISA Titer: 1:1562500; Positive Control: Human brain