

Product datasheet for **TA342890**

HIATL1 (MFSD14B) Rabbit Polyclonal Antibody

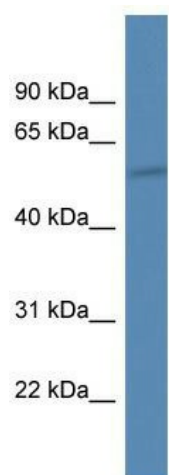
Product data:

Product Type:	Primary Antibodies
Applications:	WB
Recommended Dilution:	WB
Reactivity:	Human
Host:	Rabbit
Isotype:	IgG
Clonality:	Polyclonal
Immunogen:	The immunogen for anti-HIATL1 antibody: synthetic peptide directed towards the C terminal of human HIATL1. Synthetic peptide located within the following region: GVQKHSNSSSGSLTNTPERGSDDEDIEPLLQDSSIWELSSFEEPGNQCTEL
Formulation:	Liquid. Purified antibody supplied in 1x PBS buffer with 0.09% (w/v) sodium azide and 2% sucrose. <i>Note that this product is shipped as lyophilized powder to China customers.</i>
Conjugation:	Unconjugated
Storage:	Store at -20°C as received.
Stability:	Stable for 12 months from date of receipt.
Predicted Protein Size:	54 kDa
Gene Name:	major facilitator superfamily domain containing 14B
Database Link:	NP_115947 Entrez Gene 84641 Human Q5SR56
Background:	The function remains unknown.
Synonyms:	HIATL1
Note:	Immunogen Sequence Homology: Horse: 100%; Human: 100%; Mouse: 100%; Rabbit: 100%; Dog: 93%; Rat: 93%; Pig: 86%; Bovine: 86%; Guinea pig: 86%
Protein Families:	Transmembrane



[View online »](#)

Product images:



WB Suggested Anti-HIATL1 Antibody; Titration:
1.0 ug/ml; Positive Control: U937 Whole Cell