

## Product datasheet for **TA342889**

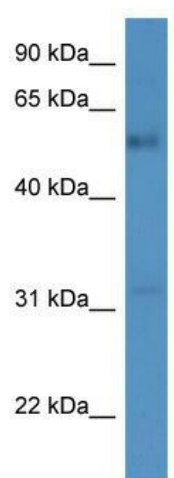
### FAM126A Rabbit Polyclonal Antibody

#### Product data:

Product Type:	Primary Antibodies
Applications:	WB
Recommended Dilution:	WB
Reactivity:	Human
Host:	Rabbit
Isotype:	IgG
Clonality:	Polyclonal
Immunogen:	The immunogen for anti-FAM126A antibody: synthetic peptide directed towards the C terminal of human FAM126A. Synthetic peptide located within the following region: MEISEVDEGFYSRAASSTSQSGLSNSSHNCSNKPSIGKNHRRSGGSKTGG
Formulation:	Liquid. Purified antibody supplied in 1x PBS buffer with 0.09% (w/v) sodium azide and 2% sucrose.
Conjugation:	Unconjugated
Storage:	Store at -20°C as received.
Stability:	Stable for 12 months from date of receipt.
Predicted Protein Size:	57 kDa
Gene Name:	family with sequence similarity 126 member A
Database Link:	<a href="#">NP_115970</a> <a href="#">Entrez Gene 84668 Human</a> <a href="#">Q9BYI3</a>
Background:	FAM126A may play a part in the beta-catenin/Lef signaling pathway. Expression of FAM126A gene is down-regulated by beta-catenin. Defects in FAM126A gene are a cause of hypomyelination with congenital cataract (HCC).
Synonyms:	DRCTNNB1A; HCC; HLD5; HYCC1
Note:	Immunogen Sequence Homology: Human: 100%; Pig: 93%; Guinea pig: 93%; Horse: 86%; Rabbit: 86%; Rat: 85%; Mouse: 85%; Dog: 79%; Bovine: 79%



[View online »](#)

**Product images:**

WB Suggested Anti-FAM126A Antibody Titration:  
0.2-1 ug/ml; ELISA Titer: 1:12500; Positive Control:  
Human Lung