

Product datasheet for **TA342888**

EMR3 (ADGRE3) Rabbit Polyclonal Antibody

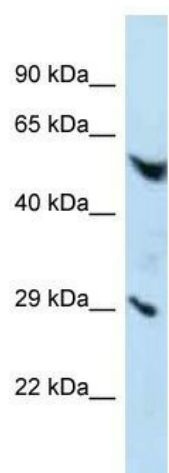
Product data:

Product Type:	Primary Antibodies
Applications:	WB
Recommended Dilution:	WB
Reactivity:	Human
Host:	Rabbit
Isotype:	IgG
Clonality:	Polyclonal
Immunogen:	The immunogen for anti-EMR3 antibody is: synthetic peptide directed towards the C-terminal region of Human EMR3. Synthetic peptide located within the following region: SQQVQKQYQKWFREIVKSKSESETYTLSSKMGPDSKPSSEGDVFPQVCRK
Formulation:	Liquid. Purified antibody supplied in 1x PBS buffer with 0.09% (w/v) sodium azide and 2% sucrose. <i>Note that this product is shipped as lyophilized powder to China customers.</i>
Purification:	Affinity Purified
Conjugation:	Unconjugated
Storage:	Store at -20°C as received.
Stability:	Stable for 12 months from date of receipt.
Predicted Protein Size:	57 kDa
Gene Name:	adhesion G protein-coupled receptor E3
Database Link:	NP_115960 Entrez Gene 84658 Human Q9BY15
Background:	The function of this protein remains unknown.
Synonyms:	EMR3
Note:	Immunogen Sequence Homology: Human: 100%
Protein Families:	Druggable Genome, Secreted Protein, Transmembrane



[View online »](#)

Product images:



Host: Rabbit; Target Name: EMR3; Sample Tissue: HepG2 Whole Cell lysates; Antibody Dilution: 1.0 ug/ml