

## Product datasheet for **TA342887**

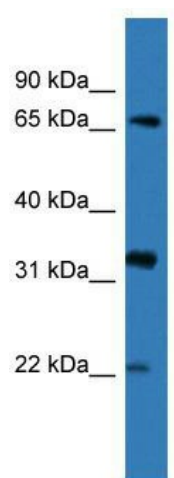
### DOK4 Rabbit Polyclonal Antibody

#### Product data:

Product Type:	Primary Antibodies
Applications:	WB
Recommended Dilution:	WB
Reactivity:	Human
Host:	Rabbit
Isotype:	IgG
Clonality:	Polyclonal
Immunogen:	The immunogen for anti-DOK4 antibody: synthetic peptide directed towards the N terminal of human DOK4. Synthetic peptide located within the following region: GPQRLEKYPDEKSVCLRGCPKVTEISNVKCVTRLPKETKRQAVAIIFTDD
Formulation:	Liquid. Purified antibody supplied in 1x PBS buffer with 0.09% (w/v) sodium azide and 2% sucrose. <i>Note that this product is shipped as lyophilized powder to China customers.</i>
Conjugation:	Unconjugated
Storage:	Store at -20°C as received.
Stability:	Stable for 12 months from date of receipt.
Predicted Protein Size:	36 kDa
Gene Name:	docking protein 4
Database Link:	<a href="#">NP_060580</a> <a href="#">Entrez Gene 55715 Human</a> <a href="#">Q8TEW6</a>
Background:	DOK proteins are enzymatically inert adaptor or scaffolding proteins. They provide a docking platform for the assembly of multimolecular signaling complexes. DOK4 functions in RET-mediated neurite outgrowth and plays a positive role in activation of the MAP kinase pathway
Synonyms:	IRS-5; IRS5
Note:	Immunogen Sequence Homology: Dog: 100%; Pig: 100%; Rat: 100%; Horse: 100%; Human: 100%; Mouse: 100%; Bovine: 100%; Rabbit: 100%; Guinea pig: 100%; Zebrafish: 86%
Protein Families:	Druggable Genome



[View online »](#)

**Product images:**

WB Suggested Anti-DOK4 Antibody Titration: 0.2-1 ug/ml; ELISA Titer: 1:312500; Positive Control: 721\_B cell lysate There is BioGPS gene expression data showing that DOK4 is expressed in 721\_B